

Human CellExp™ TDGF1, Fc Tag, human recombinant

CATALOG NO: P1144-10 10 µg

ALTERNATE NAMES: TDGF1, CRGF, CRIPTO

SOURCE: HEK 293 cells (Leu 31 – Thr 172)

PURITY: > 92% by SDS – PAGE

MOL. WEIGHT: Human Cripto /TDGF1 Fc Chimera is fused with a human IgG1 Fc tag at the C-terminus, and has a calculated MW of 42.6 kDa. The predicted N-terminus is Leu 31. The reducing (R) protein migrates as 44-55 kDa in SDS-PAGE due to glycosylation.

ENDOTOXIN LEVEL: < 1.0 EU per 1µg of protein (determined by LAL method)

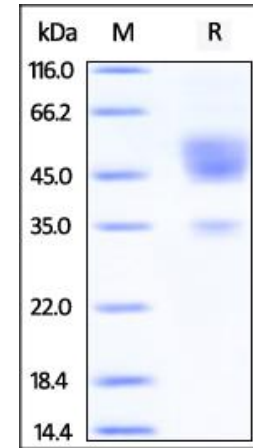
FORM: Lyophilized

FORMULATION: Lyophilized from 0.22 µm filtered solution in PBS, pH7.4. Generally Mannitol or Trehalose is added as a protectant before lyophilization.

STORAGE CONDITIONS: Store at -20°C. After reconstitution, aliquot and store at -20°C and use within 3 months. Avoid repeated freezing and thawing cycles.

RECONSTITUTION: Centrifuge the vial prior to opening. Reconstitute in sterile deionized water to a concentration of 50 µg/ml. Solubilize for 30 to 60 minutes at room temperature with occasional gentle mixing. Carrier protein (0.1% (W/V) HSA or BSA) is recommended for further dilution and long term storage. Do not vortex. This solution can be stored at 2-8°C for up to 1 month. For extended storage, it is recommended to store at -80°C.

DESCRIPTION: Teratocarcinoma-derived growth factor 1 (TDGF1) is also known as Cripto-1 growth factor (CRGF), Epidermal growth factor-like cripto protein CR1, CRIPTO, is a cell membrane which contains one EGF-like domain. TDGF1 is preferentially expressed in gastric and colorectal carcinomas than in their normal counterparts. TDGF1 interacts with the activin type-1 receptor ACVR1B. TDGF1 could play a role in the determination of the epiblastic cells that subsequently give rise to the mesoderm.



The purity of rh Cripto /TDGF1 Fc Chimera was determined by SDS-PAGE under reducing (R) condition and staining overnight with Coomassie Blue.

RELATED PRODUCT:

- TDGF1, human recombinant (**Cat. No. 4335-10, -50, -1000**)
- Human CellExp™ CD155, human recombinant (**Cat. No. 7462-10, -50**)
- Human CellExp™ CD160/BY55, human recombinant (**Cat. No. 7386-10, -50**)
- Human CellExp™ CD166/ ALCAM, human recombinant (**Cat. No. 7437-10, -50**)
- Human CellExp™ CD172A / SIRP, human recombinant (**Cat. No. 7506-10, -50**)
- Human CellExp™ CD33 / SIGLEC-3, human recombinant (**Cat. No. 7370-10, -50**)
- Human CellExp™ CD47, human recombinant (**Cat. No. 7385-10, -50**)
- Human CellExp™ CD55/DAF, human recombinant (**Cat. No. 7432-10, -50**)
- Human CellExp™ CD58 /LFA-3, human recombinant (**Cat. No. 7427-10, -50**)
- Human CellExp™ CD62E/E-Selectin, human recombinant (**Cat. No. 7434-20, -100**)
- Human CellExp™ CD71 / TFRC / TFR, human recombinant (**Cat. No. 7279-10, -50**)
- Human CellExp™ CD273, human recombinant (**Cat. No. 7369-10, -50**)
- Human CellExp™ CD36, human recombinant (**Cat. No. 7371-10, -50**)
- Human CellExp™ CD87, human recombinant (**Cat. No. 7372-20, -100**)

FOR RESEARCH USE ONLY! Not to be used on humans.