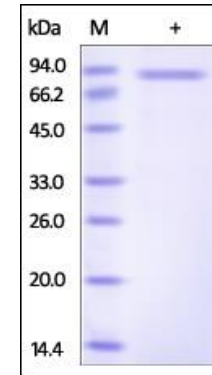


Human CellExp™ SLITRK6, human recombinant

CATALOG NO:	P1146-10	10 µg
	P1146-50	50 µg
ALTERNATE NAMES:	SLITRK6	
SOURCE:	HEK 293 cells (Ser 27 – Ser 608)	
PURITY:	> 95% by SDS – PAGE	
MOL. WEIGHT:	rhSLITRK6, fused with 6xHis tag at the C-terminus, has a calculated MW of 65.6 kDa. The predicted N-terminus is Ser 27. DTT-reduced Protein migrates as 90 kDa.	
ENDOTOXIN LEVEL:	< 1.0 EU per 1µg of protein (determined by LAL method)	
FORM:	Lyophilized	
FORMULATION:	Lyophilized from 0.22 µm filtered solution in PBS, pH7.4. Generally Mannitol or Trehalose is added as a protectant before lyophilization.	
STORAGE CONDITIONS:	Store at -20°C. After reconstitution, aliquot and store at -20°C and use within 3 months. Avoid repeated freezing and thawing cycles.	
RECONSTITUTION:	Centrifuge the vial prior to opening. Reconstitute in sterile deionized water to a concentration of 50 µg/ml. Solubilize for 30 to 60 minutes at room temperature with occasional gentle mixing. Carrier protein (0.1% (W/V) HSA or BSA) is recommended for further dilution and long term storage. Do not vortex. This solution can be stored at 2-8°C for up to 1 month. For extended storage, it is recommended to store at -80°C.	
DESCRIPTION:	SLIT and NTRK-like protein 6 (SLITRK6) belongs to the SLITRK family. SLITRK6 contains 11 LRR (leucine-rich) repeats, two LRRCT domains and two LRRNT domains. In adult brain, SLITRK6 is highly expressed in putamen and also is expressed in adult, fetal lung and fetal liver. SLITRK6 is also expressed at high levels in some brain tumors. Overexpression of SLITRK6 inhibites neurite outgrowth in cultured neurons.	



The purity of rhSLITRK6 was determined by DTT-reduced (+) SDS-PAGE and staining overnight with Coomassie Blue

RELATED PRODUCT:

- Human CellExp™ TNFRSF10B /TRAILR2, human recombinant (Cat. No. 7448-10)
- Human CellExp™ CD155, human recombinant (Cat. No. 7462-10, -50)
- Human CellExp™ CD160/BY55, human recombinant (Cat. No. 7386-10, -50)
- Human CellExp™ CD166/ ALCAM, human recombinant (Cat. No. 7437-10, -50)
- Human CellExp™ CD172A / SIRP, human recombinant (Cat. No. 7506-10, -50)
- Human CellExp™ CD33 / SIGLEC-3, human recombinant (Cat. No. 7370-10, -50)
- Human CellExp™ CD47, human recombinant (Cat. No. 7385-10, -50)
- Human CellExp™ CD55/DAF, human recombinant (Cat. No. 7432-10, -50)
- Human CellExp™ CD58 /LFA-3, human recombinant (Cat. No. 7427-10, -50)
- Human CellExp™ CD62E/E-Selectin, human recombinant (Cat. No. 7434-20, -100)
- Human CellExp™ CD71 / TFRC / TFR, human recombinant (Cat. No. 7279-10, -50)
- Human CellExp™ CD273, human recombinant (Cat. No. 7369-10, -50)
- Human CellExp™ CD36, human recombinant (Cat. No. 7371-10, -50)
- Human CellExp™ CD87, human recombinant (Cat. No. 7372-20, -100)

FOR RESEARCH USE ONLY! Not to be used on humans.