

# Human CellExp™ LILRB2, Fc tag, human recombinant

**CATALOG NO:** P1147-10 10 µg  
P1147-50 50 µg

**ALTERNATE NAMES:** LILRB2, ILT4, LIR2, MIR10, CD85d

**SOURCE:** HEK 293 cells (Gln 22 - Val 461)

**PURITY:** > 85% by SDS-PAGE

**MOL. WEIGHT:** This protein carries a human IgG1 Fc tag at the C-terminus. The protein has a calculated MW of 74.4 kDa. The protein migrates as 110 kDa on a SDS-PAGE gel under reducing (R) condition due to glycosylation.

**ENDOTOXIN LEVEL:** < 1.0 EU per 1µg of protein (determined by LAL method)

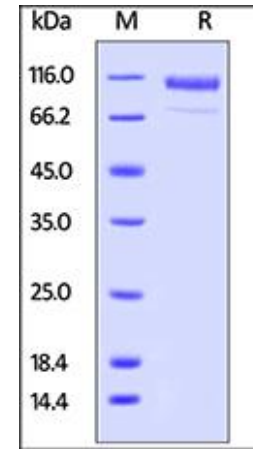
**FORM:** Lyophilized

**FORMULATION:** Lyophilized from 0.22 µm filtered solution in PBS, pH7.4. Generally Mannitol or Trehalose is added as a protectant before lyophilization.

**STORAGE CONDITIONS:** Store at -20°C. After reconstitution, aliquot and store at -20°C and use within 3 months. Avoid repeated freezing and thawing cycles.

**RECONSTITUTION:** Centrifuge the vial prior to opening. Reconstitute in sterile deionized water to a concentration of 50 µg/ml. Solubilize for 30 to 60 minutes at room temperature with occasional gentle mixing. Carrier protein (0.1% (W/V) HSA or BSA) is recommended for further dilution and long term storage. Do not vortex. This solution can be stored at 2-8°C for up to 1 month.

**DESCRIPTION:** Leukocyte immunoglobulin-like receptor subfamily B member 2 (LILRB2) is also known as CD85 antigen-like family member D (CD85d), Immunoglobulin-like transcript 4 (ILT-4), Monocyte / macrophage immunoglobulin-like receptor 10 (MIR-10), which is a member of the the subfamily B class of LIR receptors. LILRB2 is receptor for class I MHC antigens. LILRB2 recognizes a broad spectrum of HLA-A, HLA-B, HLA-C and HLA-G alleles. LILRB2 competes with CD8A for binding to class I MHC antigens. LILRB2 / CD85d inhibits FCGR1A-mediated phosphorylation of cellular proteins and mobilization of intracellular calcium ions.



Human LILRB2, Fc tag on SDS-PAGE under reducing (R) condition.

## RELATED PRODUCT:

- Human CellExp™ CSF1R / CD115 / CD6, human recombinant (Cat. No. 7505-10)
- Human CellExp™ CSF1R/CD115, mouse recombinant, Fc Tag (Cat. No. P1079-10)
- Human CellExp™ CSF1R/CD115, mouse recombinant (Cat. No. P1080-10, -50)
- Human CellExp™ CD166/ ALCAM, human recombinant (Cat. No. 7437-10, -50)
- Human CellExp™ CD172A / SIRP, human recombinant (Cat. No. 7506-10, -50)
- Human CellExp™ CD33 / SIGLEC-3, human recombinant (Cat. No. 7370-10, -50)
- Human CellExp™ CD47, human recombinant (Cat. No. 7385-10, -50)
- Human CellExp™ CD55/DAF, human recombinant (Cat. No. 7432-10, -50)
- Human CellExp™ CD58 /LFA-3, human recombinant (Cat. No. 7427-10, -50)
- Human CellExp™ CD62E/E-Selectin, human recombinant (Cat. No. 7434-20, -100)
- Human CellExp™ CD71 / TFRC / TFR, human recombinant (Cat. No. 7279-10, -50)
- Human CellExp™ CD273, human recombinant (Cat. No. 7369-10, -50)
- Human CellExp™ CD36, human recombinant (Cat. No. 7371-10, -50)
- Human CellExp™ CD87, human recombinant (Cat. No. 7372-20, -100)

**FOR RESEARCH USE ONLY! Not to be used on humans.**