

# Human CellExp™ CD58 / LFA-3, Fc Tag, human recombinant

**CATALOG NO:** P1150-10 10 µg  
P1150-50 50 µg

**ALTERNATE NAMES:** CD58, LFA3, Ag3

**SOURCE:** HEK 293 cells (Phe 29 - Arg 215)

**PURITY:** > 95% by SDS-PAGE

**MOL. WEIGHT:** This protein carries a human IgG1 Fc tag at the C-terminus. The protein has a calculated MW of 48.1 kDa. As a result of different glycosylation, The protein migrates as 60-75 kDa under reducing (R) condition and 125-150 kDa under non-reducing (NR) condition on SDS-PAGE gel.

**ENDOTOXIN LEVEL:** < 1.0 EU per 1µg of protein (determined by LAL method)

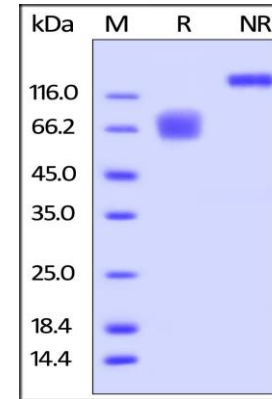
**FORM:** Lyophilized

**FORMULATION:** Lyophilized from 0.22 µm filtered solution in PBS, pH7.4. Generally Mannitol or Trehalose is added as a protectant before lyophilization.

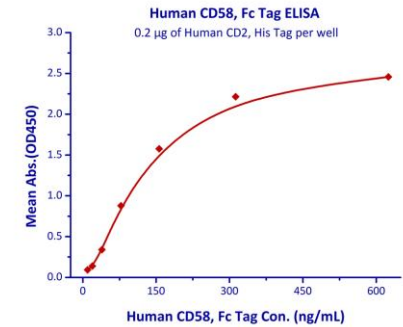
**STORAGE CONDITIONS:** Store at -20°C. After reconstitution, aliquot and store at -20°C and use within 3 months. Avoid repeated freezing and thawing cycles.

**RECONSTITUTION:** Centrifuge the vial prior to opening. Reconstitute in sterile deionized water to a concentration of 50 µg/ml. Solubilize for 30 to 60 minutes at room temperature with occasional gentle mixing. Carrier protein (0.1% (W/V) HSA or BSA) is recommended for further dilution and long term storage. Do not vortex. This solution can be stored at 2-8°C for up to 1 month.

**DESCRIPTION:** CD antigen CD58 is also known as Lymphocyte function-associated antigen 3 (LFA-3). CD58 is a cell adhesion molecule expressed on Antigen Presenting Cells (APC), particularly macrophages. CD58 /LFA3 is ligand of the T-lymphocyte CD2 glycoprotein, which binds to CD2 (LFA-2) [3] on T cells and is important in strengthening the adhesion between the T cells and Professional Antigen Presenting Cells. In addition, the LFA-3/CD2 interaction may prime response by both the CD2+ and LFA-3+ cells. Polymorphisms in the CD58 gene are associated with increased risk for multiple sclerosis.



Human CD58, Fc Tag on SDS-PAGE under reducing (R) and non-reducing (NR) conditions



Immobilized Human CD2, His Tag at 2 µg/mL (100 µL/well) can bind Human CD58, Fc Tag with a linear range of 10-156 ng/mL

## RELATED PRODUCT:

- Human CellExp™ CD58 /LFA-3, human recombinant (Cat. No. 7427-10, -50)
- Human CellExp™ CD155, human recombinant (Cat. No. 7462-10, -50)
- Human CellExp™ CD160/BY55, human recombinant (Cat. No. 7386-10, -50)
- Human CellExp™ CD166/ ALCAM, human recombinant (Cat. No. 7437-10, -50)
- Human CellExp™ CD172A / SIRP, human recombinant (Cat. No. 7506-10, -50)
- Human CellExp™ CD33 / SIGLEC-3, human recombinant (Cat. No. 7370-10, -50)
- Human CellExp™ CD47, human recombinant (Cat. No. 7385-10, -50)
- Human CellExp™ CD55/DAF, human recombinant (Cat. No. 7432-10, -50)
- Human CellExp™ CD58 /LFA-3, human recombinant (Cat. No. 7427-10, -50)
- Human CellExp™ CD62E/E-Selectin, human recombinant (Cat. No. 7434-20, -100)
- Human CellExp™ CD71 / TFRC / TFR, human recombinant (Cat. No. 7279-10, -50)
- Human CellExp™ CD273, human recombinant (Cat. No. 7369-10, -50)
- Human CellExp™ CD36, human recombinant (Cat. No. 7371-10, -50)
- Human CellExp™ CD87, human recombinant (Cat. No. 7372-20, -100)

**FOR RESEARCH USE ONLY! Not to be used on humans.**