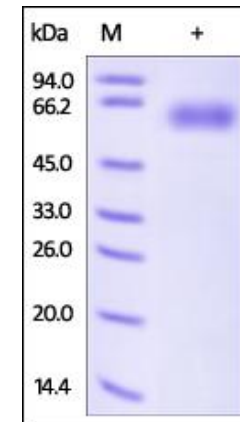


## Human CellExp™ ROR1, human recombinant

<b>CATALOG NO:</b>	P1152-10	10 µg
	P1152-50	50 µg
<b>ALTERNATE NAMES:</b>	ROR1, NTRKR1	
<b>SOURCE:</b>	HEK 293 cells (Gln 30 - Glu 403)	
<b>PURITY:</b>	> 95% by SDS – PAGE	
<b>MOL. WEIGHT:</b>	rh ROR1 is fused with a polyhistidine tag at the C-terminus, and has a calculated MW of 43.5 kDa. The predicted N-terminus is Gln 30. DTT-reduced Protein migrates as 55-66 kDa in SDS-PAGE due to glycosylation.	
<b>ENDOTOXIN LEVEL:</b>	< 1.0 EU per 1µg of protein (determined by LAL method)	
<b>FORM:</b>	Lyophilized	
<b>FORMULATION:</b>	Lyophilized from 0.22 µm filtered solution in PBS, pH7.4. Generally Mannitol or Trehalose is added as a protectant before lyophilization.	
<b>STORAGE CONDITIONS:</b>	Store at -20°C. After reconstitution, aliquot and store at -20°C and use within 3 months. Avoid repeated freezing and thawing cycles.	
<b>RECONSTITUTION:</b>	Centrifuge the vial prior to opening. Reconstitute in sterile deionized water to a concentration of 50 µg/ml. Solubilize for 30 to 60 minutes at room temperature with occasional gentle mixing. Carrier protein (0.1% (W/V) HSA or BSA) is recommended for further dilution and long term storage. Do not vortex. This solution can be stored at 2-8°C for up to 1 month.	
<b>DESCRIPTION:</b>	Tyrosine-protein kinase transmembrane receptor ROR1 is also known as Neurotrophic tyrosine kinase, receptor-related 1 (NTRKR1), which belongs to the protein kinase superfamily or tyr protein kinase family or ROR subfamily. ROR1 contains 1 FZ (frizzled) domain, 1 Ig-like C2-type (immunoglobulin-like) domain, 1 kringle domain, 1 protein kinase domain. ROR1 is expressed at high levels during early embryonic development. The expression levels drop strongly around day 16 and there are only very low levels in adult tissues. Isoform Short is strongly expressed in fetal and adult CNS and in a variety of human cancers, including those originating from CNS or PNS neuroectoderm. ROR1 could interact with casein kinase 1 epsilon (CK1ε) to activate phosphoinositide 3-kinase-mediated AKT phosphorylation and cAMP-response-element-binding protein (CREB), which was associated with enhanced tumor-cell growth.	



The purity of rh ROR1 was determined by DTT-reduced (+) SDS-PAGE and staining overnight with Coomassie Blue

### RELATED PRODUCT:

- Human CellExp™ TNFRSF10B /TRAILR2, human recombinant (Cat. No. 7448-10)
- Human CellExp™ CD155, human recombinant (Cat. No. 7462-10, -50)
- Human CellExp™ CD160/BY55, human recombinant (Cat. No. 7386-10, -50)
- Human CellExp™ CD166/ ALCAM, human recombinant (Cat. No. 7437-10, -50)
- Human CellExp™ CD172A / SIRP, human recombinant (Cat. No. 7506-10, -50)
- Human CellExp™ CD33 / SIGLEC-3, human recombinant (Cat. No. 7370-10, -50)
- Human CellExp™ CD47, human recombinant (Cat. No. 7385-10, -50)
- Human CellExp™ CD55/DAF, human recombinant (Cat. No. 7432-10, -50)
- Human CellExp™ CD58 /LFA-3, human recombinant (Cat. No. 7427-10, -50)
- Human CellExp™ CD62E/E-Selectin, human recombinant (Cat. No. 7434-20, -100)
- Human CellExp™ CD71 / TFRC / TFR, human recombinant (Cat. No. 7279-10, -50)
- Human CellExp™ CD273, human recombinant (Cat. No. 7369-10, -50)
- Human CellExp™ CD36, human recombinant (Cat. No. 7371-10, -50)
- Human CellExp™ CD87, human recombinant (Cat. No. 7372-20, -100)

**FOR RESEARCH USE ONLY! Not to be used on humans.**