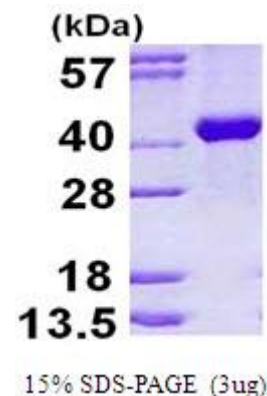


## ALDOB, human recombinant

<b>CATALOG NO:</b>	P1157-10      10 µg P1157-50      50 µg
<b>ALTERNATE NAMES:</b>	Fructose-bisphosphate aldolase B, ALDB, ALDO2
<b>CONCENTRATION:</b>	1 mg/ml (determined by Bradford assay)
<b>SOURCE:</b>	<i>E.coli</i> (1-364aa)
<b>PURITY:</b>	> 95% by SDS-PAGE
<b>MOL. WEIGHT:</b>	This protein is fused with 6x His tag at N terminus and the protein has a calculated MW of 42 kDa (388aa)
<b>FORM:</b>	Liquid
<b>FORMULATION:</b>	In 20 mM Tris-HCl buffer (pH 8.0) containing 1 mM DTT, 10% glycerol, 0.1 M NaCl
<b>STORAGE CONDITIONS:</b>	Store at +4°C for short term (1-2 weeks). For long term storage, aliquot and store at -70°C. Avoid repeated freeze/thaw cycles.
<b>SEQUENCE:</b>	<pre> MGSSHHHHHH  SSGLVPRGSH  MGS  DSSINQSIGG VILFHETLYQ  KDSQGKLFNR  ILKEKGIVVG  IKLDQGGAPL AGTNKETTIQ  GLDGLSERCA  QYKKDGVDFG  KWRAVLRID QCPSSLAIQE  NANALARYAS  ICQQNGLVPI  VEPEVIPDGD HDLEHCQYVT  EKVLAAVYKA  LNDHHVYLEG  TLLKPNMVTA GHACTKKYTP  MAHRFP  ALTQEKKEL  SEIAQSIVAN GKGILAADES  VGTMGNRLQR  IKVENTEENR  RQFREILFSV EQVAMATVTA  LHRTVPAAVP  GICFLSGGMS  EEDATLNLNA INLCPLPKPW  KLSFSYGRAL  QASALAAWGG  KANKEATQE AFMKRAMANC  QAAKGQYVHT  GSSGAASTQS  LFTACYTY                     </pre>
<b>DESCRIPTION:</b>	Fructose-bisphosphate aldolase B, also known as ALDOB, is one of three known aldolase isoenzymes, and is found in kidney and small adult intestine where it is associated with aldolases A or C. ALDOB catalyzes the reversible cleavage of fructose 1-phosphate into dihydroxyacetone phosphate and glyceraldehyde. It is regulated by the hormones Insulin and glucagon and has been implicated in hereditary fructose intolerance disease. Recombinant human ALDOB protein, fused to His-tag at N-terminus, was expressed in <i>E.coli</i> and purified by using conventional chromatography techniques.



Human recombinant ALDOB

### RELATED PRODUCT:

- PKD2, Active (Cat. No. 7711-5)
- PAK4, Active (Cat. No. 7707-5)
- Human Recombinant ALDH2 (Cat. No. 6322-100)
- Human Recombinant PKM2 (Cat. No. 6372-100)
- Phosphogluconate dehydrogenase, human recombinant (Cat. No. P1051-50)
- GAPDH, Active, human recombinant (Cat. No. P1100-10, -50)

**FOR RESEARCH USE ONLY! Not to be used on humans.**