

Human CellExp™ ANGPTL7 / CDT6, Human Recombinant

CATALOG NO:	P1169-10	10 µg
	P1169-50	50 µg
ALTERNATE NAMES:	Angiopietin-related protein 7, ANGPTL7, CDT6, Angiopietin-like factor, Angiopietin-like protein 7, Cornea-derived transcript 6 protein	
SOURCE:	HEK 293 cells (Gln 27 - Pro 346)	
PURITY:	> 85% by SDS – PAGE	
MOL. WEIGHT:	This protein carries a polyhistidine tag at the C-terminus. The protein has a calculated MW of 39 kDa. The protein migrates as 38-40 kDa and 50-55 kDa under reducing (R) condition (SDS-PAGE) due to glycosylation	
ENDOTOXIN LEVEL:	< 1.0 EU per 1µg of protein (determined by LAL method)	
FORM:	Lyophilized	
FORMULATION:	Lyophilized from 0.22 µm filtered solution in PBS, pH7.4. Generally Mannitol or Trehalose is added as a protectant before lyophilization.	
STORAGE CONDITIONS:	Store at -20°C. After reconstitution, aliquot and store at -20°C and use within 3 months. Avoid repeated freezing and thawing cycles.	
RECONSTITUTION:	Centrifuge the vial prior to opening. Reconstitute in sterile deionized water to a concentration of 50 µg/ml. Solubilize for 30 to 60 minutes at room temperature with occasional gentle mixing. Carrier protein (0.1% (W/V) HSA or BSA) is recommended for further dilution and long term storage. Do not vortex.	
DESCRIPTION:	Angiopietin-like 7 (ANGPTL7) is also known as Corneal-Derived Transcript 6 (CDT6), and is a secreted glycoprotein that is structurally related to the angiopietins. It is expressed in the corneal stroma, trabecular meshwork, and sclera and is elevated in glaucoma aqueous humor. Recently, ANGPTL proteins, including ANGPTL-2, -3, -4, -5 and -7, are identified as growth factors in combination with SCF, Thrombopietin, IGF-II and FGF acidic that enhance the expansion and engraftment of human and mouse hematopoietic stem cells.	
BIOLOGICAL ACTIVITY:	Immobilized Human ANGPTL7, His Tag at 5 µg/mL (100 µL/well) can bind Human LILRB4, LILRB2, and LILRB3 Fc Tag with a linear range of 0.031-0.5 µg/mL, 0.031-2 µg/mL and 0.016-1 µg/mL respectively.	

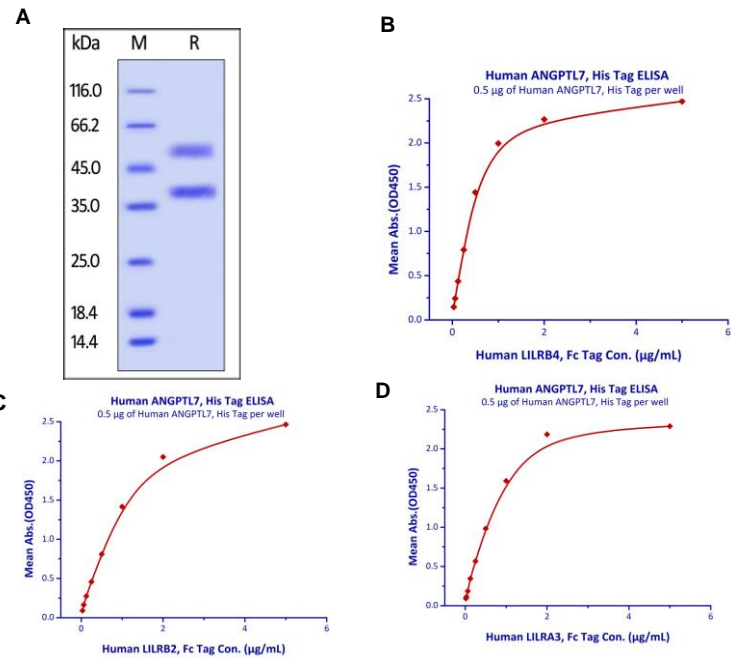


Fig. A: Human ANGPTL7, His Tag on SDS-PAGE under reducing (R) condition
Fig. B: Immobilized Human ANGPTL7, His Tag at 5 µg/mL (100 µL/well) can bind Human LILRB4, Fc Tag with a linear range of 0.031-0.5 µg/mL.
Fig. C: Immobilized Human ANGPTL7, His Tag at 5 µg/mL (100 µL/well) can bind Human LILRB2, Fc Tag with a linear range of 0.031-2 µg/mL.
Fig. D: Immobilized Human ANGPTL7, His Tag at 5 µg/mL (100 µL/well) can bind Human LILRA3, Fc Tag with a linear range of 0.016-1 µg/mL.

RELATED PRODUCT:

- Human CellExp™ Angiopietin-2, human recombinant (Cat. No. 7395)
- Human CellExp™ Angiopietin-2, mouse recombinant (Cat. No. 7555)
- ANGPTL7, Human Recombinant (Cat. No. 7116)
- ANG-1, Human Recombinant (Cat. No. 7115)
- ANGPTL1 Antibody (NT) (Cat. No. 6761)
- ANGPT1 Antibody (CT) (Cat. No. 6760)

FOR RESEARCH USE ONLY! Not to be used on humans.

