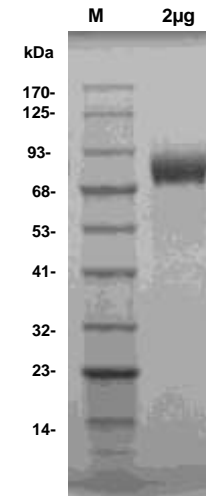


## Human CellExp™ Integrin beta-5 Extracellular Domain (ED), Human Recombinant

<b>CATALOG NO:</b>	P1172-10 P1172-50	10 µg 50 µg
<b>ALTERNATE NAMES:</b>	ITGB5, integrin subunit beta 5, integrin beta 5	
<b>SOURCE:</b>	HEK 293 cells (Gly 24-Asn 719)	
<b>PURITY:</b>	> 95% by SDS-PAGE	
<b>MOL. WEIGHT:</b>	This protein is fused with polyhistidine tag at the C-terminus and has a calculated MW of ~77.3 kDa (24-719aa). Under reducing conditions the protein migrates as ~90 kDa polypeptide in SDS-PAGE due to glycosylation.	
<b>FORM:</b>	Lyophilized	
<b>FORMULATION:</b>	Lyophilized from 0.22 µm filtered solution in PBS pH 7.4. Generally 5-8% Mannitol or Trehalose is added as a protectant before lyophilization.	
<b>STORAGE CONDITIONS:</b>	Store at 4°C. After reconstitution, aliquot and store at -80°C. Avoid repeated freezing and thawing cycles.	
<b>RECONSTITUTION:</b>	Centrifuge the vial prior to opening. Reconstitute in distilled water.	
<b>DESCRIPTION:</b>	Integrins are a family of cell surface transmembrane receptors, each consisting of an $\alpha$ and a $\beta$ subunit that bind to extracellular matrix (ECM) proteins and cellular counter receptors and associate with the cytoskeleton. In mammals, 24 different integrins are generated through different combinations of 18 $\alpha$ and 8 $\beta$ subunits. A number of human congenital disorders have been associated with defective integrin-mediated adhesion, including the blistering disorder junctional epidermolysis bullosa, the bleeding disorder Glanzmann's thrombastenia, leukocyte adhesion deficiency-I ( $\beta 2$ integrins in leukocytes) and leukocyte adhesion deficiency-III, nephrotic syndrome and interstitial lung disease and muscular dystrophy. Integrin alpha-V/beta-5 is a receptor for fibronectin and it recognizes the sequence R-G-D in its ligand.	



**SDS-PAGE (4-20%) of Recombinant Integrin beta-5 (ED):** Recombinant protein loaded under reducing conditions and stained with Coomassie Blue. The protein shows a predicted MW of ~ 90 kDa.

### RELATED PRODUCTS:

- Human CellExp™ Integrin alpha V beta 5 Heterodimer, Human recombinant (**Cat. No. P1121**)
- Human CellExp™ Integrin alpha V beta 8, Human recombinant (**Cat. No. P1122**)
- Anti-alpha 5 beta 1 Integrin (Volociximab), Human IgG4 Antibody (**Cat. No. A1092**)
- Human CellExp™ Her2/ErbB2, Extracellular Domain (ED), Human Recombinant (**Cat. No. P1160**)

**FOR RESEARCH USE ONLY! Not to be used on humans.**