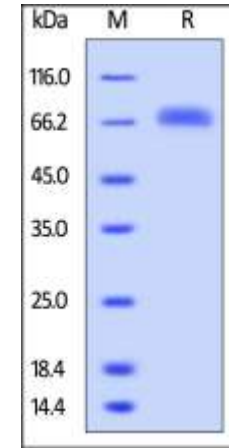


Human CellExp™ LILRB5 / CD85c / LIR-8, Human Recombinant

CATALOG NO:	P1173-10 P1173-50	10 µg 50 µg
ALTERNATE NAMES:	LILRB5, CD85c, LIR-8	
SOURCE:	HEK 293 cells (AA Gly 24 - Gly 458)	
PURITY:	> 95% by SDS – PAGE	
MOL. WEIGHT:	This protein carries a polyhistidine tag at the C-terminus. The protein has a calculated MW of 49.2 kDa. The protein migrates as 66-68 kDa under reducing (R) condition (SDS-PAGE) due to glycosylation.	
ENDOTOXIN LEVEL:	< 1.0 EU per 1µg of protein (determined by LAL method)	
FORM:	Lyophilized	
FORMULATION:	Lyophilized from 0.22 µm filtered solution in PBS, pH7.4. Generally Mannitol or Trehalose is added as a protectant before lyophilization.	
STORAGE CONDITIONS:	Store at -20°C. After reconstitution, aliquot and store at -20°C and use within 3 months. Avoid repeated freezing and thawing cycles.	
RECONSTITUTION:	Centrifuge the vial prior to opening. Reconstitute in sterile deionized water to a concentration of 50 µg/ml. Solubilize for 30 to 60 minutes at room temperature with occasional gentle mixing. Carrier protein (0.1% (W/V) HSA or BSA) is recommended for further dilution and long term storage. Do not vortex. This solution can be stored at 2-8°C for up to 1 month.	
DESCRIPTION:	Leukocyte immunoglobulin-like receptor subfamily B member 5 (LILRB5), also known as CD85c and LIR-8, belongs to the leukocyte immunoglobulin-like receptor (LIR) family of transmembrane glycoproteins that negatively regulate immune cell activation. Several other LIR subfamily B receptors are expressed on immune cells where they bind to MHC class I molecules on antigen-presenting cells and inhibit stimulation of an immune response.	



Human LILRB5 / CD85c / LIR-8, His Tag on
SDS-PAGE under reducing (R) condition

RELATED PRODUCT:

- Human CellExp™ TNFRSF10B /TRAILR2, human recombinant (**Cat. No. 7448-10**)
- Human CellExp™ CD155, human recombinant (**Cat. No. 7462-10, -50**)
- Human CellExp™ CD160/BY55, human recombinant (**Cat. No. 7386-10, -50**)
- Human CellExp™ CD166/ ALCAM, human recombinant (**Cat. No. 7437-10, -50**)
- Human CellExp™ CD172A / SIRP, human recombinant (**Cat. No. 7506-10, -50**)
- Human CellExp™ CD33 / SIGLEC-3, human recombinant (**Cat. No. 7370-10, -50**)
- Human CellExp™ CD47, human recombinant (**Cat. No. 7385-10, -50**)
- Human CellExp™ CD55/DAF, human recombinant (**Cat. No. 7432-10, -50**)
- Human CellExp™ CD58 /LFA-3, human recombinant (**Cat. No. 7427-10, -50**)
- Human CellExp™ CD62E/E-Selectin, human recombinant (**Cat. No. 7434-20, -100**)
- Human CellExp™ CD71 / TFRC / TFR, human recombinant (**Cat. No. 7279-10, -50**)
- Human CellExp™ CD273, human recombinant (**Cat. No. 7369-10, -50**)
- Human CellExp™ CD36, human recombinant (**Cat. No. 7371-10, -50**)
- Human CellExp™ CD87, human recombinant (**Cat. No. 7372-20, -100**)

FOR RESEARCH USE ONLY! Not to be used on humans.