

Human CellExp™ LAG-3 / CD223, Cynomolgus Recombinant

CATALOG NO: P1179-10 10 µg
P1179-50 50 µg

ALTERNATE NAMES: LAG3, CD223, FDC

SOURCE: HEK 293 cells (Ala 18 - His 449)

PURITY: > 85% by SDS – PAGE

MOL. WEIGHT: This protein carries a mouse IgG2a Fc tag at the C-terminus. The protein has a calculated MW of 73.7 kDa. The protein migrates as 78-92 kDa under reducing (R) condition (SDS-PAGE) due to glycosylation..

ENDOTOXIN LEVEL: < 1.0 EU per 1µg of protein (determined by LAL method)

FORM: Lyophilized

FORMULATION: Lyophilized from 0.22 µm filtered solution in PBS, pH7.4. Generally Mannitol or Trehalose is added as a protectant before lyophilization.

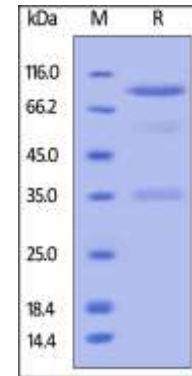
STORAGE CONDITIONS: Store at -20°C. After reconstitution, aliquot and store at -20°C and use within 3 months. Avoid repeated freezing and thawing cycles.

RECONSTITUTION: Centrifuge the vial prior to opening. Reconstitute in sterile deionized water to a concentration of 50 µg/ml. Solubilize for 30 to 60 minutes at room temperature with occasional gentle mixing. Carrier protein (0.1% (W/V) HSA or BSA) is recommended for further dilution and long term storage. Do not vortex. This solution can be stored at 2-8°C for up to 1 month.

DESCRIPTION: Lymphocyte activation gene 3 protein (LAG3) is also known as CD antigen CD223 and protein FDC, which belongs to immunoglobulin (Ig) superfamily and contains 4 extracellular Ig-like domains. The LAG3 gene contains 8 exons. The sequence data, exon/intron organization, and chromosomal localization all indicate a close relationship of LAG3 to CD4. LAG3 /CD223 involved in lymphocyte activation. LAG3 /CD223 binds to HLA class-II antigens.

SPECIFIC ACTIVITY: Immobilized Cynomolgus LAG-3, mouse IgG2a Fc tag at 2 µg/mL (100 µL/well) can bind Anti-LAG3 MAb, Human IgG1 with a linear range of 3-20 ng/mL.

A



B

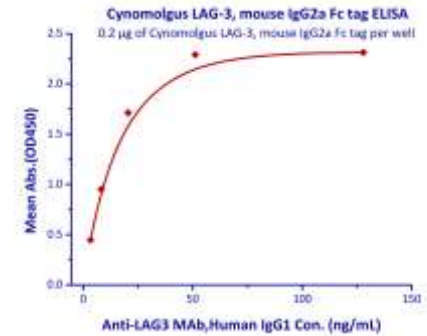


Fig. A. Cynomolgus LAG-3 / CD223, Mouse IgG2a Fc Tag on SDS-PAGE under reducing (R) condition.

Fig. B. Immobilized Cynomolgus LAG-3, mouse IgG2a Fc tag at 2 µg/mL (100 µl/well) can bind Anti-LAG3 MAb, Human IgG1 with a linear range of 3-20 ng/ml.

RELATED PRODUCT:

- Human CellExp™ TNFRSF10B /TRAILR2, human recombinant (Cat. No. 7448-10)
- Human CellExp™ CD155, human recombinant (Cat. No. 7462-10, -50)
- Human CellExp™ CD160/BY55, human recombinant (Cat. No. 7386-10, -50)
- Human CellExp™ CD166/ ALCAM, human recombinant (Cat. No. 7437-10, -50)
- Human CellExp™ CD172A / SIRP, human recombinant (Cat. No. 7506-10, -50)
- Human CellExp™ CD33 / SIGLEC-3, human recombinant (Cat. No. 7370-10, -50)
- Human CellExp™ CD47, human recombinant (Cat. No. 7385-10, -50)
- Human CellExp™ CD55/DAF, human recombinant (Cat. No. 7432-10, -50)
- Human CellExp™ CD58 /LFA-3, human recombinant (Cat. No. 7427-10, -50)
- Human CellExp™ CD62E/E-Selectin, human recombinant (Cat. No. 7434-20, -100)
- Human CellExp™ CD71 / TFRC / TFR, human recombinant (Cat. No. 7279-10, -50)
- Human CellExp™ CD273, human recombinant (Cat. No. 7369-10, -50)
- Human CellExp™ CD36, human recombinant (Cat. No. 7371-10, -50)
- Human CellExp™ CD87, human recombinant (Cat. No. 7372-20, -100)

FOR RESEARCH USE ONLY! Not to be used on humans.