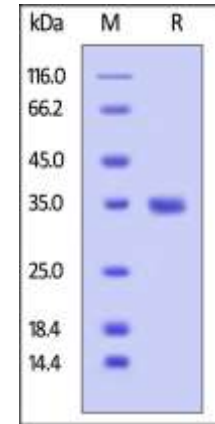


## Human CellExp™ IgG2 Fc, Human Recombinant

<b>CATALOG NO:</b>	P1189-10 P1189-50	10 µg 50 µg
<b>ALTERNATE NAMES:</b>	IgG Fc	
<b>SOURCE:</b>	HEK 293 cells (Glu 99 - Lys 326)	
<b>PURITY:</b>	> 95% by SDS – PAGE	
<b>MOL. WEIGHT:</b>	This protein carries no tag. The protein has a calculated MW of 25.7 kDa. The protein migrates as 33-35 kDa under reducing (R) condition (SDS-PAGE) due to glycosylation.	
<b>ENDOTOXIN LEVEL:</b>	< 1.0 EU per 1µg of protein (determined by LAL method)	
<b>FORM:</b>	Lyophilized	
<b>FORMULATION:</b>	Lyophilized from 0.22 µm filtered solution in PBS, pH7.4. Generally Mannitol or Trehalose is added as a protectant before lyophilization.	
<b>STORAGE CONDITIONS:</b>	Store at -20°C. After reconstitution, aliquot and store at -20°C and use within 3 months. Avoid repeated freezing and thawing cycles.	
<b>RECONSTITUTION:</b>	Centrifuge the vial prior to opening. Reconstitute in sterile deionized water to a concentration of 50 µg/ml. Solubilize for 30 to 60 minutes at room temperature with occasional gentle mixing. Carrier protein (0.1% (W/V) HSA or BSA) is recommended for further dilution and long term storage. Do not vortex. This solution can be stored at 2-8°C for up to 1 month.	
<b>DESCRIPTION:</b>	Immunoglobulin G2 (IgG2) is a member of many immunoglobulin G developed and secreted by effective B cells. In wake of cutting by pepsin, IgG is divided into two F(ab)s with one antigen binding site and a high conserved Fc segment. The Fc segment bears a highly conserved N-glycosylation site. There are two members of IgG2: IgG2a and IgG2b. It was found that IgG2a was superior to IgG1 in activating complement. The glycosylation of the circulating immunoglobulin-γ (IgG) antibody molecules changes in rheumatoid arthritis. Ig gamma-2 chain Fc region contains two constant regions of IgG2 H chain (CH2, CH3).	



Human IgG2 Fc, Tag Free on SDS-PAGE under reducing (R) condition

### RELATED PRODUCT:

- Human CellExp™ TNFRSF10B /TRAILR2, human recombinant (Cat. No. 7448-10)
- Human CellExp™ CD155, human recombinant (Cat. No. 7462-10, -50)
- Human CellExp™ CD160/BY55, human recombinant (Cat. No. 7386-10, -50)
- Human CellExp™ CD166/ ALCAM, human recombinant (Cat. No. 7437-10, -50)
- Human CellExp™ CD172A / SIRP, human recombinant (Cat. No. 7506-10, -50)
- Human CellExp™ CD33 / SIGLEC-3, human recombinant (Cat. No. 7370-10, -50)
- Human CellExp™ CD47, human recombinant (Cat. No. 7385-10, -50)
- Human CellExp™ CD55/DAF, human recombinant (Cat. No. 7432-10, -50)
- Human CellExp™ CD58 /LFA-3, human recombinant (Cat. No. 7427-10, -50)
- Human CellExp™ CD62E/E-Selectin, human recombinant (Cat. No. 7434-20, -100)
- Human CellExp™ CD71 / TFRC / TFR, human recombinant (Cat. No. 7279-10, -50)
- Human CellExp™ CD273, human recombinant (Cat. No. 7369-10, -50)
- Human CellExp™ CD36, human recombinant (Cat. No. 7371-10, -50)
- Human CellExp™ CD87, human recombinant (Cat. No. 7372-20, -100)

**FOR RESEARCH USE ONLY! Not to be used on humans.**