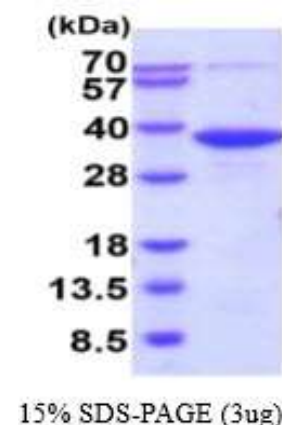


## PGP, human recombinant

<b>CATALOG NO:</b>	P1190-10	10 µg
	P1190-50	50 µg
<b>ALTERNATE NAMES:</b>	Phosphoglycolate phosphatase, Glycerol-3-phosphate phosphatase, G3PP, Aspartate-based ubiquitous Mg(2+)-dependent phosphatase, AUM	
<b>CONCENTRATION:</b>	0.5 mg/ml (determined by Bradford assay)	
<b>SOURCE:</b>	<i>E.coli</i> (1-321aa)	
<b>PURITY:</b>	> 95% by SDS-PAGE	
<b>MOL. WEIGHT:</b>	This protein is fused with 6x His tag at N terminus and the protein has a calculated MW of 36.5 kDa (345aa)	
<b>FORM:</b>	Liquid	
<b>FORMULATION:</b>	20mM Tris-HCl buffer (pH8.0) containing 0.15M NaCl, 10% glycerol, 1mM DTT	
<b>STORAGE CONDITIONS:</b>	Store at +4°C for short term (1-2 weeks). For long term storage, aliquot and store at -20°C or -70°C. Avoid repeated freeze/thaw cycles.	
<b>SEQUENCE:</b>	<p>MGSSHHHHHH SSGLVPRGSH MGSMAAAEA GGDDARCVRL          SAERAQALLA DVDTLLFDCD GVLWRGETAV PGAPEALRAL          RARGKRLGFI TNNSSKTRAA YAEKLRRLGF GGPAGPGASL          EVFGTAYCTA LYLRQRLAGA PPKAYVLGS PALAAELEAV          GVASVGVGPE PLQGE GPGDW LHAPLEPDVR AVVVGFDPHF          SYMKLTKALR YLQQPGCLLV GTNMDNRLPL ENGRFIAGTG          CLVRAVEMAA QRQADIIGKP SRFIFDCVSQ EYGINPERTV          MVGDRLDTDI LLGATCGLKT ILTLTGVSTL GDVKNNQESD          CVSKKKMVPD FYVDSIADLL PALQG</p>	
<b>DESCRIPTION:</b>	Phosphoglycolate phosphatase, also known as PGP, is detected in all tissues including red cells, lymphocytes and cultured fibroblasts (at protein level). The catalytic activity of PGP is 2-phosphoglycolate + H <sub>2</sub> O = glycolate + phosphate. The highest activities occur in skeletal muscle and cardiac muscle. Recombinant human PGP protein, fused to His-tag at N-terminus, was expressed in <i>E.coli</i> and purified by using conventional chromatography techniques.	
<b>SPECIFIC ACTIVITY:</b>	Specific activity is > 3,000 units/mg, and is defined as the amount of enzyme that hydrolyze 1.0 nmole of p-nitrophenyl phosphate (pNPP) per minute at pH 7.5 at 37C.	



Human recombinant PGP

### RELATED PRODUCT:

- Ethanolamine Kinase 2, human recombinant (**Cat. No. P1158**)
- Glucokinase, human liver, recombinant (**Cat. No. 7776**)
- Glucokinase, human pancreatic, recombinant (**Cat. No. 7777**)
- Guanylate kinase, human recombinant (**Cat. No. P1101**)
- Human Recombinant PKLR (**Cat. No. 6373**)
- Human Recombinant PKM2 (**Cat. No. 6372**)
- NAD Kinase, human recombinant (**Cat. No. 7560**)
- NAD Kinase (catalytic domain), human recombinant (**Cat. No. 7559**)
- Human CellExp™ Cathepsin S, human recombinant (**Cat. No. 7277-10**)

**FOR RESEARCH USE ONLY! Not to be used on humans.**