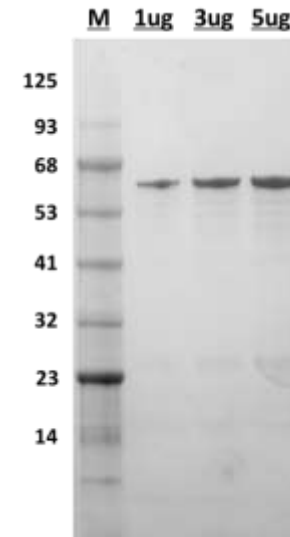


Tau-441, Human Recombinant

CATALOG NO:	P1192-50 50 µg P1192-250 250 µg
ALTERNATE NAMES:	MAPTL, MTBT1, TAU, Neurofibrillary tangle protein, Paired helical filament-tau
SOURCE:	<i>E.coli</i>
PURITY:	> 90% by SDS-PAGE
MOL. WEIGHT:	This protein is fused with 6x His tag and the protein has a calculated MW of 48 kDa (441aa)
FORM:	Lyophilized
FORMULATION:	Freeze-dried in PBS
RECONSTITUTION:	Reconstitute to 4 mg/mL in sterile water, store at -80°C in aliquots and use within 6 months after reconstitution. Avoid repeated freeze-thaw cycles.
STORAGE CONDITIONS:	Lyophilized protein can be stored at -20°C. Upon reconstitution for long term storage, it is recommended to store at -80°C. Avoid repeated freezing and thawing cycles.
SEQUENCE:	MGSSHHHHHSSGLVPRGSH - MAEPRQEFEV MEDHAGTYGL GDRKDQGGYT MHQDQEGDTD AGLKESPLQT PTEDGSEEPG SETSDAKSTP TAEDVTAPLV DEGAPGKQAA AQPHTIPEG TTAEEAGIGD TPSLEDEAAG HVTQARMVSK SKDGTGSDDK KAKGADGKTK IATPRGAAPP GQKQANATR IPAKTPPAPK TPPSSGEPK SGDRSGYSSP GSPGTPGSR S RTPSLPTPPT REPKKVAVVR TPPKSPSSAK SRLQTAPVPM PDLKNVSKSI GSTENLKHQP GGGKVQIINK KLDLSNVQSK CGSKDNIKHV PGGGSVQIVY KPDVLSKVTS KCGSLGNIHH KPGGGQVEVK SEKLDKFDKRV QSKIGSLDNI THVPGGGNKK IETHKLTFRE NAKAKTDHGA EIVYKSPVVS GDTSPRHLSN VSSTGSIDMV DSPQLATLAD EVSASLAKQG L
DESCRIPTION:	Tau is a microtubule-associated protein involved in Alzheimer's and Parkinson's disease. It promotes microtubule assembly and stability, and might participate in the establishment and maintenance of neuronal polarity. The C-terminus binds axonal microtubules while the N-terminus binds neural plasma membrane components, suggesting that tau functions as a linker protein between both. Axonal polarity is predetermined by TAU/MAPT localization (in the neuronal cell) in the domain of the cell body defined by the centrosome. The short isoforms allow plasticity of the cytoskeleton whereas the longer isoforms may preferentially play a role in its stabilization.



SDS-PAGE (4-20%) of recombinant human Tau-441: Recombinant Protein loaded under reducing conditions and stained with Coomassie Blue. Lane M-MW marker, Lanes 2-4 Tau

RELATED PRODUCT:

- Tau Blocking Peptide (**Cat. No. 3549RBP**)
- Tau Antibody (**Cat. No. 3549R**)
- Tau-13 Antibody (Clone B11E8) (**Cat. No. 3453**)
- Phospho-Tau Antibody (**Cat. No. 3550R**)
- Tau / MAPT (Human) ELISA Kit (**Cat. No. K4263**)

FOR RESEARCH USE ONLY! Not to be used on humans.