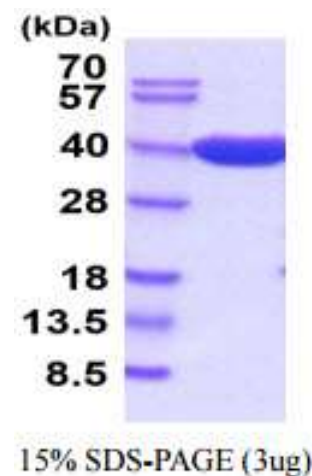


Beta-lactaminase, Human Recombinant

CATALOG NO:	P1196-20 20 µg P1196-100 100 µg
ALTERNATE NAMES:	ampC, ampA, Cephalosporinase
CONCENTRATION:	1 mg/ml (determined by Bradford assay)
SOURCE:	<i>E.coli</i> (20-377aa)
PURITY:	> 95% by SDS-PAGE
MOL. WEIGHT:	This protein is fused with 6x His tag at N terminus and the protein has a calculated MW of 41.8 kDa (379aa)
FORM:	Liquid
FORMULATION:	In 20 mM Tris-HCl buffer (pH8.0) containing 10% glycerol
STORAGE CONDITIONS:	Can be stored at +4C short term (1-2 weeks). For long term storage, aliquot and store at -20C or -70C. Avoid repeated freezing and thawing cycles.
SEQUENCE:	MGSSHHHHHH SSSLVPRGSH MAPQQINDIV HRTITPLIEQ QKIPGMVA V IYQGKPYFT WGYADIKKQ PVTQQTFLFEL GSVSKTFTGV LGGDAIARGE IKLSDPTTKY WPELTAKQWN GITLLHLATY TAGGLPLQVP DEVKSSDLL RFYQNWQPAW APGTQRLYAN SSIGLFGALA VKPSGLSFEQ AMQTRVFQPL KLNHTWINVP PAEEKNYAWG YREGKAVHVS PGALDAEAYG VKSTIEDMAR WVQSNLKPLD INEKTLLQGGI QLAQSRYWQT GDMYQGLGWE MLDWPVNPDS IINGSDNKIA LAARPVKAIT PPTPAVRASW VHKTGATGGF GSYVAFIPEK ELGIVMLANK NYPNPARVDA AWQILNALQ
DESCRIPTION:	AmpC, also known as Beta-lactamase, is the most widespread resistance mechanism to beta-lactam antibiotics, such as the penicillins and the cephalosporins. These antibiotics have a common element in their molecular structure: a four-atom ring known as a beta-lactam. The lactamase enzyme breaks that ring open, deactivating the molecule's antibacterial properties. Recombinant <i>E.coli</i> beta-lactamase protein, fused to His-tag at N-terminus, was expressed in <i>E.coli</i> and purified by using conventional chromatography.
PECIFIC ACTIVITY:	Specific activity is >700 units/mg, in which One unit will hydrolyze 1.0 µmole of Nitrocefin per minute at pH 7.0 at 37C.



Human recombinant Beta-lactaminase

RELATED PRODUCT:

- CSTB, human recombinant (Cat. No. 9235-10)
- CST6, human recombinant (Cat. No. 9234-10)
- Cathepsin B, Active, human recombinant (Cat. No. 7580-50)
- Cathepsin D, Active, human recombinant (Cat. No. 9229-50)
- Cathepsin K, Active, human recombinant (Cat. No. 7600-50)
- Cathepsin L, human recombinant (Cat. No. 1135-100)
- Cathepsin S, Active, human recombinant (Cat. No. 7526-50)
- Human CellExp™ Cathepsin B, human recombinant (Cat. No. 7408-10)
- Human CellExp™ Cathepsin D, human recombinant (Cat. No. 7409-10)
- Human CellExp™ Cathepsin L1, human recombinant (Cat. No. 7410-10)
- Human CellExp™ Cathepsin S, human recombinant (Cat. No. 7277-10)
- Cathepsin D Activity Fluorometric Assay Kit (Cat. No. K143-100)
- Cathepsin B Activity Fluorometric Assay Kit (Cat. No. K140-100)

FOR RESEARCH USE ONLY! Not to be used on humans.