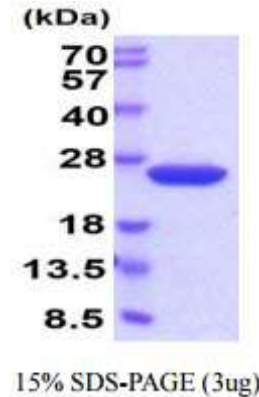


Cyclophilin B, Mouse Recombinant

CATALOG NO:	P1197-20 20 µg P1197-100 100 µg
ALTERNATE NAMES:	AA408962, AA553318, AI844835, Cphn-2, Cphn2, CyP-20b
CONCENTRATION:	1 mg/ml (determined by Bradford assay)
SOURCE:	<i>E.coli</i> (34-216aa)
PURITY:	> 95% by SDS-PAGE
MOL. WEIGHT:	This protein is fused with 6x His tag at N terminus and the protein has a calculated MW of 22.7 kDa (207aa)
FORM:	Liquid
FORMULATION:	In Phosphate Buffered Saline (pH7.4) containing 10% glycerol
STORAGE CONDITIONS:	Can be stored at +4C short term (1-2 weeks). For long term storage, aliquot and store at -20C or -70C. Avoid repeated freezing and thawing cycles.
SEQUENCE:	MGSSHHHHH SSGLVPRGSH MGSMNDKKGK PKVTVKVFYFD LQIGDESVGR VVFGLFGKTV PKTVDNFVAL ATGEKGFYK NSKFHRVIKD FMIQGGDFTR GDGTGGKSIY GERFPDENFK LKHYGPGWVS MANAGKDTNG SQFFITTVKT SWLDGKHVVF GKVLEGMDVV RKVESTKTDS RDKPLKDVII VDSGKIEVEK PFAIAKE
DESCRIPTION:	PHPT1 is a 125 amino acid enzyme belonging to the Janus protein family. Existing as a monomer in the cytoplasm, PHPT1 is an EDTA-insensitive phosphohistidine phosphatase. Overexpression of PHPT1 leads to specific phosphohistidine phosphatase activity towards phosphopeptide I, with no activity detected towards phosphotyrosine, phosphothreonine and phosphoserine peptides. Recombinant human PHPT1 protein, fused to His-tag at N-terminus, was expressed in <i>E.coli</i> and purified by using conventional chromatography techniques.
SPECIFIC ACTIVITY:	Specific activity is >1,000 nmol/min/mg, and is defined as the amount of enzyme that cleaves 1 nmole of suc-AAFP-PNA per minute at 37C in Tris-HCl pH 8.0 using chymotrypsin.



Human recombinant Ppib

RELATED PRODUCT:

- CSTB, human recombinant (**Cat. No. 9235-10**)
- CST6, human recombinant (**Cat. No. 9234-10**)
- Cathepsin B, Active, human recombinant (**Cat. No. 7580-50**)
- Cathepsin D, Active, human recombinant (**Cat. No. 9229-50**)
- Cathepsin K, Active, human recombinant (**Cat. No. 7600-50**)
- Cathepsin L, human recombinant (**Cat. No. 1135-100**)
- Cathepsin S, Active, human recombinant (**Cat. No. 7526-50**)
- Human CellExp™ Cathepsin B, human recombinant (**Cat. No. 7408-10**)
- Human CellExp™ Cathepsin D, human recombinant (**Cat. No. 7409-10**)
- Human CellExp™ Cathepsin L1, human recombinant (**Cat. No. 7410-10**)
- Human CellExp™ Cathepsin S, human recombinant (**Cat. No. 7277-10**)
- Cathepsin D Activity Fluorometric Assay Kit (**Cat. No. K143-100**)
- Cathepsin B Activity Fluorometric Assay Kit (**Cat. No. K140-100**)

FOR RESEARCH USE ONLY! Not to be used on humans.