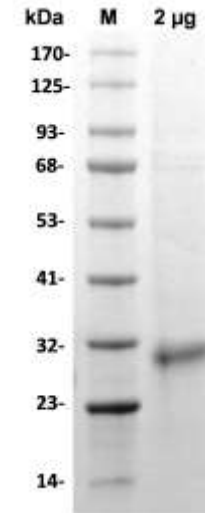


## Human CellExp™ KRAS, Human Recombinant

<b>CATALOG NO:</b>	P1198-10	10 µg
	P1198-50	50 µg
	P1198-250	250 µg
	P1198-1000	1 mg
<b>ALTERNATE NAMES:</b>	NS, NS3, CFC2, RALD, KRAS1, KRAS2, RASK2, KI-RAS, C-K-RAS, K-RAS2A, K-RAS2B, K-RAS4A, K-RAS4B, c-Ki-ras2	
<b>SOURCE:</b>	HEK 293 cells (Met 1 - Cys 186)	
<b>PURITY:</b>	> 95% by SDS-PAGE	
<b>MOL. WEIGHT:</b>	This protein is fused with polyhistidine tag at the C-terminus and has a calculated MW of ~23 kDa (1-186 aa). The protein migrates as a ~30 kDa under reducing conditions in SDS-PAGE due to glycosylation.	
<b>FORM:</b>	Lyophilized	
<b>FORMULATION:</b>	Lyophilized from 0.22 µm filtered solution in PBS pH 7.4	
<b>STORAGE CONDITIONS:</b>	Store at -20°C. After reconstitution, aliquot and store at -80°C. Avoid repeated freezing and thawing cycles.	
<b>RECONSTITUTION:</b>	Centrifuge the vial prior to opening. Reconstitute in distilled water.	
<b>DESCRIPTION:</b>	Ras proteins bind GDP/GTP and possess intrinsic GTPase activity. It plays an important role in the regulation of cell proliferation and promoting oncogenic events by inducing transcriptional silencing of tumor suppressor genes in colorectal cancer cells.	



**SDS-PAGE (4-20%) of Human Recombinant Kras:** Recombinant protein loaded under reducing conditions and stained with Coomassie Blue. The protein shows a MW of ~ 30 kDa

### RELATED PRODUCT:

- CCL14/HCC-1/HCC-3, human recombinant (**Cat. No. 4275**)
- CXCL14/BRAK, human recombinant (**Cat. No. 4278**)
- Lymphotactin, human recombinant (**Cat. No. 4375**)
- MCP-1 (MCAF), human recombinant (**Cat. No. 4222**)
- MCP-3, human recombinant (**Cat. No. 4228**)
- MIP-1alpha, human recombinant (**Cat. No. 4244**)
- SDF-1alpha (CXCL12), human recombinant (**Cat. No. 4387**)
- SDF-1beta (CXCL12), human recombinant (**Cat. No. 4390**)

**FOR RESEARCH USE ONLY! Not to be used on humans.**