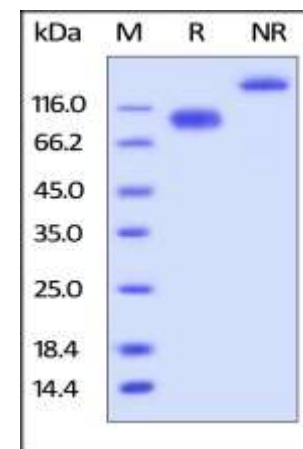


## Human CellExp™ LILRB3 / CD85a / ILT5, Fc Tag, Human Recombinant

<b>CATALOG NO:</b>	P1205-10 P1205-50	10 µg 50 µg
<b>ALTERNATE NAMES:</b>	LILRB3, CD85a, ILT5	
<b>SOURCE:</b>	HEK 293 cells (Gln 24 - Glu 443)	
<b>PURITY:</b>	> 95% by SDS - PAGE	
<b>MOL. WEIGHT:</b>	This protein carries a human IgG1 Fc tag at the C-terminus. The protein has a calculated MW of 72.8 kDa. As a result of glycosylation, the protein migrates as 90-115 kDa under reducing (R) condition, and 150 kDa under non-reducing (NR) condition (SDS-PAGE).	
<b>ENDOTOXIN LEVEL:</b>	< 1.0 EU per 1µg of protein (determined by LAL method)	
<b>FORM:</b>	Lyophilized	
<b>FORMULATION:</b>	Lyophilized from 0.22 µm filtered solution in PBS, pH7.4. Generally Mannitol or Trehalose is added as a protectant before lyophilization.	
<b>STORAGE CONDITIONS:</b>	Store at -20°C. After reconstitution, aliquot and store at -70°C and use within 3 months. Avoid repeated freezing and thawing cycles.	
<b>RECONSTITUTION:</b>	Centrifuge the vial prior to opening. Reconstitute in sterile deionized water to a concentration of 50 µg/ml. Solubilize for 30 to 60 minutes at room temperature with occasional gentle mixing. Carrier protein (0.1% (W/V) HSA or BSA) is recommended for further dilution and long term storage. Do not vortex. This solution can be stored at 2-8°C for up to 1 month.	
<b>DESCRIPTION:</b>	Leukocyte immunoglobulin-like receptor subfamily B member 3 is also known as LILRB3, ILT-5 or CD85a. LILRB3 plays a role as receptor for class I MHC antigens, which activated upon coligation of LILRB3 and immune receptors, such as FCGR2B and the B-cell receptor. LILRB3 and LILRA6 represent a pair of inhibitory/activating receptors with identical extracellular domains and unknown ligands. LILRB3 can mediate inhibitory signaling via immunoreceptor tyrosine-based inhibition motifs in its cytoplasmic tail whereas LILRA6 can signal through association with an activating adaptor molecule, FcRγ.	



Human LILRB3, Fc Tag on SDS-PAGE under reducing (R) condition

### RELATED PRODUCT:

- Human CellExp™ TNFRSF10B /TRAILR2, human recombinant (**Cat. No. 7448-10**)
- Human CellExp™ CD155, human recombinant (**Cat. No. 7462-10, -50**)
- Human CellExp™ CD160/BY55, human recombinant (**Cat. No. 7386-10, -50**)
- Human CellExp™ CD166/ ALCAM, human recombinant (**Cat. No. 7437-10, -50**)
- Human CellExp™ CD172A / SIRP, human recombinant (**Cat. No. 7506-10, -50**)
- Human CellExp™ CD33 / SIGLEC-3, human recombinant (**Cat. No. 7370-10, -50**)
- Human CellExp™ CD47, human recombinant (**Cat. No. 7385-10, -50**)
- Human CellExp™ CD55/DAF, human recombinant (**Cat. No. 7432-10, -50**)
- Human CellExp™ CD58 /LFA-3, human recombinant (**Cat. No. 7427-10, -50**)
- Human CellExp™ CD62E/E-Selectin, human recombinant (**Cat. No. 7434-20, -100**)
- Human CellExp™ CD71 / TFRC / TFR, human recombinant (**Cat. No. 7279-10, -50**)
- Human CellExp™ CD273, human recombinant (**Cat. No. 7369-10, -50**)
- Human CellExp™ CD36, human recombinant (**Cat. No. 7371-10, -50**)
- Human CellExp™ CD87, human recombinant (**Cat. No. 7372-20, -100**)

**FOR RESEARCH USE ONLY! Not to be used on humans.**