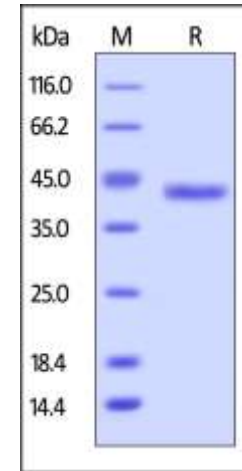


## Human CellExp™ Galectin-4, Human Recombinant

<b>CATALOG NO:</b>	P1208-10            10 µg P1208-50            50 µg
<b>ALTERNATE NAMES:</b>	LGALS4, L36LBP, Gal-4, Antigen NY-CO-27, Lactose-binding lectin 4
<b>SOURCE:</b>	HEK 293 cells (Met 1 - Ile 323)
<b>PURITY:</b>	> 95% by SDS – PAGE
<b>MOL. WEIGHT:</b>	This protein carries a polyhistidine tag at the N-terminus. The protein has a calculated MW of 38.1 kDa. The protein migrates as 40-44 kDa under reducing (R) condition (SDS-PAGE) due to glycosylation
<b>ENDOTOXIN LEVEL:</b>	< 1.0 EU per 1µg of protein (determined by LAL method)
<b>FORM:</b>	Lyophilized
<b>FORMULATION:</b>	Lyophilized from 0.22 µm filtered solution in 50 mM HEPES, 150 mM NaCl, pH7.4. Normally trehalose is added as protectant before lyophilization.
<b>STORAGE CONDITIONS:</b>	Store at -20°C. After reconstitution, aliquot and store at -20°C and use within 3 months. Avoid repeated freezing and thawing cycles.
<b>RECONSTITUTION:</b>	Centrifuge the vial prior to opening. Reconstitute in sterile deionized water to a concentration of 50 µg/ml. Solubilize for 30 to 60 minutes at room temperature with occasional gentle mixing. Carrier protein (0.1% (W/V) HSA or BSA) is recommended for further dilution and long term storage. Do not vortex. This solution can be stored at 2-8°C for up to 1 month.
<b>DESCRIPTION:</b>	Galectin-4 (Gal-4), also known as L36LBP (L-36 lactose-binding protein). The galectins are a family of beta-galactoside-binding proteins implicated in modulating cell-cell and cell-matrix interactions. Galectin-4 expression is concentrated within microvilli in the gastrointestinal epithelium, where it can interact with CD3 and bind activated T cells in the lamina propria during intestinal inflammation. LGALS4 is an S-type lectin that is strongly underexpressed in colorectal cancer.



Human Galectin-4, His tag on SDS-PAGE under reducing (R) condition. The gel was stained overnight with Coomassie Blue.

### RELATED PRODUCT:

- Galectin-4, human recombinant (**Cat. No. 7364**)
- Human CellExp™ CD155, human recombinant (**Cat. No. 7462-10, -50**)
- Human CellExp™ CD160/BY55, human recombinant (**Cat. No. 7386-10, -50**)
- Human CellExp™ CD166/ ALCAM, human recombinant (**Cat. No. 7437-10, -50**)
- Human CellExp™ CD172A / SIRP, human recombinant (**Cat. No. 7506-10, -50**)
- Human CellExp™ CD33 / SIGLEC-3, human recombinant (**Cat. No. 7370-10, -50**)
- Human CellExp™ CD47, human recombinant (**Cat. No. 7385-10, -50**)
- Human CellExp™ CD55/DAF, human recombinant (**Cat. No. 7432-10, -50**)
- Human CellExp™ CD58 /LFA-3, human recombinant (**Cat. No. 7427-10, -50**)
- Human CellExp™ CD62E/E-Selectin, human recombinant (**Cat. No. 7434-20, -100**)
- Human CellExp™ CD71 / TFRC / TFR, human recombinant (**Cat. No. 7279-10, -50**)
- Human CellExp™ CD273, human recombinant (**Cat. No. 7369-10, -50**)
- Human CellExp™ CD36, human recombinant (**Cat. No. 7371-10, -50**)
- Human CellExp™ CD87, human recombinant (**Cat. No. 7372-20, -100**)

**FOR RESEARCH USE ONLY! Not to be used on humans.**