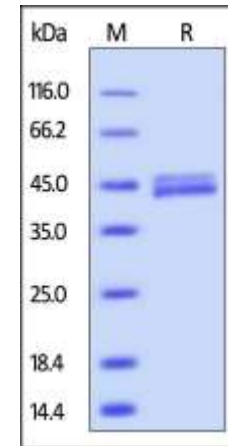


Human CellExp™ Galectin-4, Mouse Recombinant

| | | |
|----------------------------|--|----------------|
| CATALOG NO: | P1209-10 P1209-50 | 10 µg 50 µg |
| ALTERNATE NAMES: | LGALS4, L36LBP, Gal-4, Antigen NY-CO-27, Lactose-binding lectin 4 | |
| SOURCE: | HEK 293 cells (Met 1 - Ile 326) | |
| PURITY: | > 92% by SDS – PAGE | |
| MOL. WEIGHT: | This protein carries a polyhistidine tag at the N-terminus. The protein has a calculated MW of 38.6 kDa. The protein migrates as 44 kDa and 45-46 kDa under reducing (R) condition (SDS-PAGE) due to glycosylation | |
| ENDOTOXIN LEVEL: | < 1.0 EU per 1µg of protein (determined by LAL method) | |
| FORM: | Lyophilized | |
| FORMULATION: | Lyophilized from 0.22 µm filtered solution in 50 mM HEPES, 150 mM NaCl, pH7.4. Normally trehalose is added as protectant before lyophilization. | |
| STORAGE CONDITIONS: | Store at -20°C. After reconstitution, aliquot and store at -20°C and use within 3 months. Avoid repeated freezing and thawing cycles. | |
| RECONSTITUTION: | Centrifuge the vial prior to opening. Reconstitute in sterile deionized water to a concentration of 50 µg/ml. Solubilize for 30 to 60 minutes at room temperature with occasional gentle mixing. Carrier protein (0.1% (W/V) HSA or BSA) is recommended for further dilution and long term storage. Do not vortex. This solution can be stored at 2-8°C for up to 1 month. | |
| DESCRIPTION: | Galectin-4 (Gal-4), also known as L36LBP (L-36 lactose-binding protein). The galectins are a family of beta-galactoside-binding proteins implicated in modulating cell-cell and cell-matrix interactions. Galectin-4 expression is concentrated within microvilli in the gastrointestinal epithelium, where it can interact with CD3 and bind activated T cells in the lamina propria during intestinal inflammation. LGALS4 is an S-type lectin that is strongly underexpressed in colorectal cancer. | |



Mouse Galectin-4, His tag on SDS-PAGE under reducing (R) condition. The gel was stained overnight with Coomassie Blue.

RELATED PRODUCT:

- Galectin-4, human recombinant (**Cat. No. 7364**)
- Human CellExp™ CD155, human recombinant (**Cat. No. 7462-10, -50**)
- Human CellExp™ CD160/BY55, human recombinant (**Cat. No. 7386-10, -50**)
- Human CellExp™ CD166/ALCAM, human recombinant (**Cat. No. 7437-10, -50**)
- Human CellExp™ CD172A / SIRP, human recombinant (**Cat. No. 7506-10, -50**)
- Human CellExp™ CD33 / SIGLEC-3, human recombinant (**Cat. No. 7370-10, -50**)
- Human CellExp™ CD47, human recombinant (**Cat. No. 7385-10, -50**)
- Human CellExp™ CD55/DAF, human recombinant (**Cat. No. 7432-10, -50**)
- Human CellExp™ CD58 /LFA-3, human recombinant (**Cat. No. 7427-10, -50**)
- Human CellExp™ CD62E/E-Selectin, human recombinant (**Cat. No. 7434-20, -100**)
- Human CellExp™ CD71 / TFRC / TFR, human recombinant (**Cat. No. 7279-10, -50**)
- Human CellExp™ CD273, human recombinant (**Cat. No. 7369-10, -50**)
- Human CellExp™ CD36, human recombinant (**Cat. No. 7371-10, -50**)
- Human CellExp™ CD87, human recombinant (**Cat. No. 7372-20, -100**)

FOR RESEARCH USE ONLY! Not to be used on humans.