

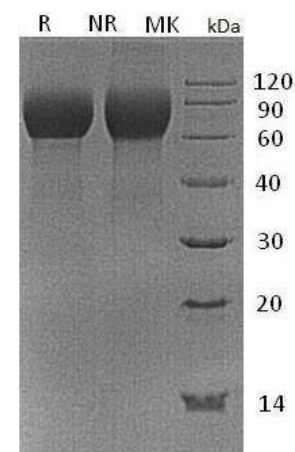
Human CellExp™ Hemopexin, Human Recombinant

| | | |
|----------------------------|---|----------------|
| CATALOG NO: | P1210-10 P1210-50 | 10 µg 50 µg |
| ALTERNATE NAMES: | Beta-1B-glycoprotein, HPX, Hpxn | |
| SOURCE: | Human cells (Thr24 - His462), 6His tag at the C-terminus | |
| PURITY: | > 95% by SDS – PAGE | |
| ENDOTOXIN LEVEL: | < 1.0 EU per 1µg of protein | |
| FORM: | Liquid | |
| FORMULATION: | Supplied as a 0.2 µm filtered solution of 20 mM MES, 150 mM NaCl, and pH 5.5 | |
| STORAGE CONDITIONS: | Store at -20°C. After reconstitution, aliquot and store at -20°C and use within 6 months. Avoid repeated freezing and thawing cycles. | |

DESCRIPTION: Hemopexin (HPX) is plasma glycoprotein belongs to the family of the acute-phase proteins whose synthesis is induced after an inflammatory event. Hemopexin with two four-bladed beta - propeller folds has been found in other proteins including collagenases and provides sites for protein-protein interactions. The liver is the major synthesizing organ. Hemopexin participates in maintaining and recycling the iron pool by utilizing its high binding affinity toward heme composed of protoporphyrin IX and iron. It also functions in preventing oxidation caused by heme after hemolysis. Hydrophobic heme molecules can intercalate into lipid membranes and participate in the oxidation of lipid membrane components through the Fenton reaction resulting in lipid peroxidation. Hemopexin undergoes a conformational change upon the binding of heme. The conformational change allows hemopexin to interact with a specific receptor, forming a complex which is then internalized. Heme concentrations in plasma increase after hemolysis, which is associated with several pathological conditions such as reperfusion injury and ischemia.

AMINO ACID SEQ: TPLPPTSAHGNVAEGETKPPDPVTERCSDGWSFDATTLDDNGT
MLFFKGEFVWVKSHKWDRELISERWKNFSPVDAAFRQGHNSVF
LIKGDKVVVYPPEKKEKGYPKLLQDEFPGIPSPLDAAVECHRGE
CQAEGVLFFQGDREWFWDLATGTMKERSWPAVGNCSALRWL
GRYYCFQGNQFLRFDPVRGEVPPRYPRDVRDYFMPCPGRGHG
HRNGTGHGNSHHGPEYMRCSPHLVLSALTSNDHGATYAFSGT
HYWRLDTSRDGWHSWPIAHQWPQGPSAVDAAFSWEKLYLVQ

GSSRLHIMAGRRLWWLDLKSGAQATWTELPWPHEKVDGALCMEKSLGPNSCSANGPGL
YLIHGPNLYCYSVDVEKLNAAKALPQPQNVTSLLGCTHHHHHHH



Recombinant Human Hemopexin

RELATED PRODUCT:

- Hemopexin Polyclonal Antibody (**Cat. No. 7016**)
- Hemopexin Blocking Peptide (**Cat. No. 3899BP**)
- Hemopexin Antibody (**Cat. No. 3899**)
- Hemopexin, Human Plasma (**Cat. No. 7544**)
- Hemopexin, Rat Serum (**Cat. No. 7545**)

FOR RESEARCH USE ONLY! Not to be used on humans.