

Human CellExp™ CD40, Mouse Recombinant

CATALOG NO:	P1214-10	10 µg
	P1214-50	50 µg
	P1214-250	250 µg
ALTERNATE NAMES:	TNFRSF5, p50, Bp50	
SOURCE:	HEK 293 cells (Leu 20 - Arg 193)	
PURITY:	> 95% by SDS-PAGE; > 90% by SEC-HPLC	
MOL. WEIGHT:	This protein is fused with polyhistidine tag at the C-terminus and has a calculated MW of 20.5 kDa (20-193aa). Under reducing conditions the protein migrates as ~23-29 kDa in SDS-PAGE due to glycosylation.	
FORM:	Lyophilized	
FORMULATION:	Lyophilized from 0.22 µm filtered solution in PBS pH 7.4	
STORAGE CONDITIONS:	Store at -20°C. After reconstitution, aliquot and store at -80°C. Avoid repeated freeze and thaw cycles.	
RECONSTITUTION:	Centrifuge the vial prior to opening. Reconstitute in sterile deionized water.	
DESCRIPTION:	CD40, also known as Tumor necrosis factor receptor superfamily member 5 (TNFRSF5), is a 32 kDa cell surface receptor expressed by B-cells, dendritic cells, macrophages and other antigen-presenting cells. CD40 consists of N-terminal extracellular domain and C-terminal transmembrane domain. The mouse CD40 shares 61.2% of sequence identity with human CD40. Interaction between CD40 and CD40L activates antigen-presenting B-cells to produce antibody. CD40 is expressed in multiple cancer cell lines including lymphomas and myeloma.	

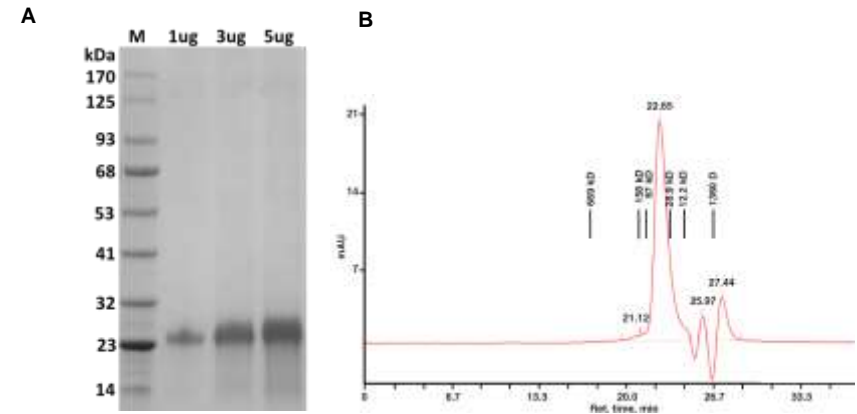


Fig A. SDS-PAGE (4-20%) of Recombinant mouse CD40: Mouse CD40 recombinant protein loaded under reducing conditions and stained with Coomassie Blue. Lane M-MW marker, Lanes 2-4 CD40

Fig B. Size exclusion chromatography of CD40: SEC analysis of CD40 protein using Superose 6 Increase™ 5x150 column in 50 mM sodium phosphate; 0.3 M NaCl pH 7.2 at 100 µl/min and monitored at 280 nm.

RELATED PRODUCTS:

- Human CellExp™ CD40 Ligand / TNFSF5, Fc tag, Human Recombinant (**Cat. No. P1175**)
- Human CellExp™ CD40 Ligand / TNFSF5 Protein, Fc Tag, Mouse recombinant (**Cat. No. P1127**)
- Human CellExp™ CD40 Ligand / TNFSF5, Human Recombinant (**Cat. No. P1174**)
- Human CellExp™ Human CD40/ TNFRSF5, Human recombinant (**Cat. No. 9230**)
- QuickDetect™ CD40 Ligand (Human) ELISA Kit (**Cat. No. K4414**)
- CD40 (mouse) ELISA Kit (**Cat. No. K3073**)
- Anti-CD40L (Ruplizumab), Human IgG1 Antibody (**Cat. No. A1094**)

FOR RESEARCH USE ONLY! Not to be used on humans.