

## Human CellExp™ IgG3 Fc, Mouse Recombinant

<b>CATALOG NO:</b>	P1233-100	100 µg
<b>ACCESSION NO:</b>	P03987-2	
<b>ALTERNATE NAMES:</b>	IgG3 Fc	
<b>SOURCE:</b>	HEK 293 cells	
<b>AMINO ACID SEQUENCE:</b>	The target protein is expressed with the sequence (aa Glu 97 - Lys 329) of Mouse IgG3 Fc region.	
<b>PURITY:</b>	≥ 92% by SDS- PAGE	
<b>MOL. WEIGHT:</b>	This protein carries no "tag". The protein has a calculated MW of 26 kDa. The protein migrates as 33 kDa under reducing (R) condition (SDS-PAGE) due to glycosylation.	
<b>ENDOTOXIN LEVEL:</b>	< 1.0 EU per 1 µg of protein as determined by LAL method.	
<b>FORM:</b>	Lyophilized	
<b>FORMULATION:</b>	Lyophilized from sterile PBS, pH 7.4. 5% trehalose, 5% mannitol, 0.01% Tween-80 are added as protectants before lyophilization.	
<b>STORAGE CONDITIONS:</b>	Store at -20 °C or -80 °C. After reconstitution, aliquot and store at -20 °C or -80 °C.	
<b>RECONSTITUTION:</b>	Centrifuge the vial prior to opening. Reconstitute in sterile deionized water to a concentration of 250 µg/ml. Do not vortex. Divide into small aliquots and store at -20 °C or -80 °C. Avoid repeated freeze-thaw cycles.	
<b>DESCRIPTION:</b>	Immunoglobulin G3 (IgG3) is a member of immunoglobulin G developed and secreted by effective B cells. In the wake of cutting by pepsin, IgG is divided into two F(ab)s with one antigen binding site and a highly conserved Fc segment. The Fc segment bears a highly conserved N-glycosylation site. Ig gamma-3 chain C region (IgG3-Fc/IGHG3) contains two constant regions of IgG3 H chain (CH2, CH3).	

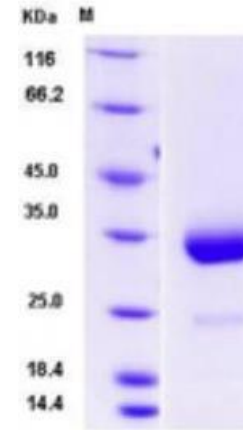


Fig A. Mouse IgG3 Fc, Tag Free was loaded on SDS-PAGE under reducing (R) conditions.

### RELATED PRODUCT:

- Human CellExp™ TNFRSF10B /TRAILR2, human recombinant (**Cat. No. 7448-10**)
- Human CellExp™ CD155, human recombinant (**Cat. No. 7462-10, -50**)
- Human CellExp™ CD160/BY55, human recombinant (**Cat. No. 7386-10, -50**)
- Human CellExp™ CD166/ ALCAM, human recombinant (**Cat. No. 7437-10, -50**)
- Human CellExp™ CD172A / SIRP, human recombinant (**Cat. No. 7506-10, -50**)
- Human CellExp™ CD33 / SIGLEC-3, human recombinant (**Cat. No. 7370-10, -50**)
- Human CellExp™ CD47, human recombinant (**Cat. No. 7385-10, -50**)
- Human CellExp™ CD55/DAF, human recombinant (**Cat. No. 7432-10, -50**)
- Human CellExp™ CD58 /LFA-3, human recombinant (**Cat. No. 7427-10, -50**)
- Human CellExp™ CD62E/E-Selectin, human recombinant (**Cat. No. 7434-20, -100**)
- Human CellExp™ CD71 / TFRC / TFR, human recombinant (**Cat. No. 7279-10, -50**)
- Human CellExp™ CD273, human recombinant (**Cat. No. 7369-10, -50**)
- Human CellExp™ CD36, human recombinant (**Cat. No. 7371-10, -50**)
- Human CellExp™ CD87, human recombinant (**Cat. No. 7372-20, -100**)

**FOR RESEARCH USE ONLY! Not to be used on humans.**