

Human CellExp™ CD48 / SLAMF2, Fc Tag, Human Recombinant

CATALOG NO:	P1243-10	10 µg
	P1243-50	50 µg
ALTERNATE NAMES:	CD48, BCM1, SLAMF2, BLAST1, BLAST, BLAST1, MEM-102, TCT.1, BCM-1, SLAMF-2, BLAST-1	
SOURCE:	HEK 293 cells (Gln 27 - Ser 220)	
PURITY:	> 95% by SDS – PAGE	
MOL. WEIGHT:	This protein carries a human IgG1 Fc tag at the C-terminus. The protein has a calculated MW of 49.0 kDa. The protein migrates as 55-65 kDa under reducing (R) condition (SDS-PAGE) due to glycosylation.	
ENDOTOXIN LEVEL:	< 1.0 EU per 1µg of protein (determined by LAL method)	
FORM:	Lyophilized	
FORMULATION:	Lyophilized from 0.22 µm filtered solution in 50 mM Tris, 100 mM Glycine, pH 7.5. Normally trehalose is added as protectant before lyophilization.	
STORAGE CONDITIONS:	Store at -20°C. After reconstitution, aliquot and store at -80°C and use within 3 months. Avoid repeated freezing and thawing cycles.	
RECONSTITUTION:	Centrifuge the vial prior to opening. Reconstitute in sterile deionized water to a concentration of 50 µg/ml. Solubilize for 30 to 60 minutes at room temperature with occasional gentle mixing. Carrier protein (0.1% (W/V) HSA or BSA) is recommended for further dilution and long term storage. Do not vortex.	
DESCRIPTION:	CD48 antigen is also known as Signaling lymphocytic activation molecule 2, SLAM family member 2 (SLAMF2), Leukocyte antigen MEM-102, BCM1 surface antigen, B-lymphocyte activation marker BLAST-1. CD48 is a 65 kDa GPI-linked protein which belongs to the CD2 subfamily of immunoglobulin superfamily molecules. CD48 antigen contains two Ig-like C2-type (immunoglobulin-like) domains and two Ig-like V-type (immunoglobulin-like) domain. CD48 interacts with CD244 in an heterophilic manner. CD48 is ligand for CD2. CD48 might facilitate interaction between activated lymphocytes. CD48 is probably involved in regulating T-cell activation.	
SPECIFIC ACTIVITY:	Immobilized Human 2B4, His Tag at 2 µg/mL (100 µL/well) can bind Human CD48, Fc Tag with a linear range of 0.078-2.5 µg/ml.	

A

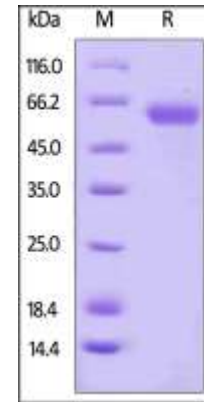


Fig. A. Human CD48 / SLAMF2 Protein, Fc Tag on SDS-PAGE under reducing (R) condition

B

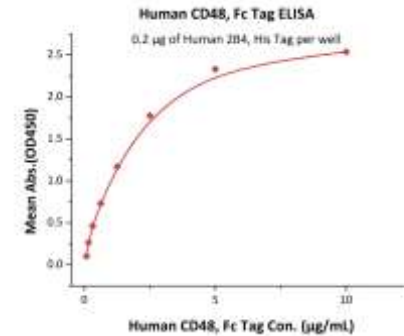


Fig. B. Immobilized Human 2B4, His Tag at 2 µg/mL (100 µL/well) can bind Human CD48, Fc Tag with a linear range of 0.078-2.5 µg/ml.

RELATED PRODUCT:

- Human CellExp™ CD48 / BCM1 / SLAMF2, human recombinant (Cat. No. 7380-10)
- Human CellExp™ CD155, human recombinant (Cat. No. 7462-10, -50)
- Human CellExp™ CD160/BY55, human recombinant (Cat. No. 7386-10, -50)
- Human CellExp™ CD166/ ALCAM, human recombinant (Cat. No. 7437-10, -50)
- Human CellExp™ CD172A / SIRP, human recombinant (Cat. No. 7506-10, -50)
- Human CellExp™ CD33 / SIGLEC-3, human recombinant (Cat. No. 7370-10, -50)
- Human CellExp™ CD47, human recombinant (Cat. No. 7385-10, -50)
- Human CellExp™ CD55/DAF, human recombinant (Cat. No. 7432-10, -50)
- Human CellExp™ CD58 /LFA-3, human recombinant (Cat. No. 7427-10, -50)
- Human CellExp™ CD62E/E-Selectin, human recombinant (Cat. No. 7434-20, -100)
- Human CellExp™ CD71 / TFRC / TFR, human recombinant (Cat. No. 7279-10, -50)
- Human CellExp™ CD273, human recombinant (Cat. No. 7369-10, -50)
- Human CellExp™ CD36, human recombinant (Cat. No. 7371-10, -50)
- Human CellExp™ CD87, human recombinant (Cat. No. 7372-20, -100)

FOR RESEARCH USE ONLY! Not to be used on humans.