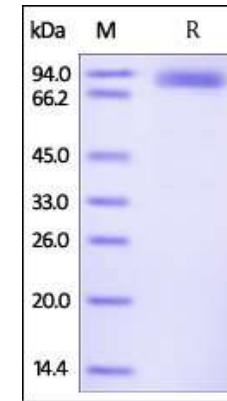


Human CellExp™ ROR2, Fc Tag, Human Recombinant

CATALOG NO:	P1255-10	10 µg
ALTERNATE NAMES:	ROR2, NTRKR2	
SOURCE:	HEK 293 cells (Glu 34 - Gly 403)	
PURITY:	> 95% by SDS – PAGE	
MOL. WEIGHT:	This protein carries a polyhistidine tag at the C-terminus. The protein has a calculated MW of 68 kDa. The protein migrates as 80-90 kDa under reducing (R) condition (SDS-PAGE) due to glycosylation.	
ENDOTOXIN LEVEL:	< 1.0 EU per 1µg of protein (determined by LAL method)	
FORM:	Lyophilized	
FORMULATION:	Lyophilized from 0.22 µm filtered solution in 50 mM Tris, 100 mM Glycine, pH7.5. Normally trehalose is added as protectant before lyophilization.	
STORAGE CONDITIONS:	Store at -20°C. After reconstitution, aliquot and store at -80°C and use within 3 months. Avoid repeated freezing and thawing cycles.	
RECONSTITUTION:	Centrifuge the vial prior to opening. Reconstitute in sterile deionized water to a concentration of 50 µg/ml. Solubilize for 30 to 60 minutes at room temperature with occasional gentle mixing. Carrier protein (0.1% (W/V) HSA or BSA) is recommended for further dilution and long term storage. Do not vortex.	
DESCRIPTION:	Tyrosine-protein kinase transmembrane receptor ROR2 is also known as Neurotrophic tyrosine kinase, receptor-related 2 (NTRKR2), which belongs to the protein kinase superfamily and Tyr protein kinase family and ROR subfamily. ROR2 is a homodimer protein, which can binds YWHAB or interact with WTIP. ROR2 may be involved in the early formation of the chondrocytes. It seems to be required for cartilage and growth plate development.	



Human ROR2, Fc Tag on SDS-PAGE under reducing (R) condition. The gel was stained overnight with Coomassie Blue.

RELATED PRODUCT:

- Human CellExp™ ROR2 / NTRKR2, Mouse Recombinant (**Cat. No. P1180**)
- Human CellExp™ ROR1, human recombinant (**Cat. No. P1152-10, -50**)
- Human CellExp™ ROR1 (308-395, Kringle domain), Human Recombinant (**Cat. No. P1247**)
- Human CellExp™ ROR1, Fc Tag, Human Recombinant (**Cat. No. P1248**)
- Human CellExp™ CD166/ ALCAM, human recombinant (**Cat. No. P1249**)
- Human CellExp™ ROR1 (165-305, Frizzled domain), Human Recombinant (**Cat. No. P1250**)
- Human CellExp™ ROR1 (39-151, Ig-like domain), Human Recombinant (**Cat. No. P1251**)
- Human CellExp™ ROR1, Mouse Recombinant (**Cat. No. P1252**)
- Human CellExp™ CD55/DAF, human recombinant (**Cat. No. 7432-10, -50**)
- Human CellExp™ CD58 /LFA-3, human recombinant (**Cat. No. 7427-10, -50**)
- Human CellExp™ CD62E/E-Selectin, human recombinant (**Cat. No. 7434-20, -100**)
- Human CellExp™ CD71 / TFRC / TFR, human recombinant (**Cat. No. 7279-10, -50**)
- Human CellExp™ CD273, human recombinant (**Cat. No. 7369-10, -50**)
- Human CellExp™ CD36, human recombinant (**Cat. No. 7371-10, -50**)
- Human CellExp™ CD87, human recombinant (**Cat. No. 7372-20, -100**)

FOR RESEARCH USE ONLY! Not to be used on humans.