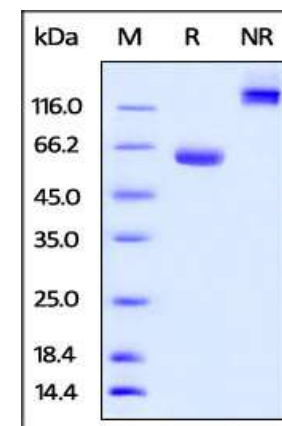


Human CellExp™ BTN1A1 / Butyrophilin, Fc Tag, Human Recombinant

CATALOG NO:	P1262-10 P1262-50	10 µg 50 µg
ALTERNATE NAMES:	BTN1A1, Butyrophilin, BTN	
SOURCE:	HEK 293 cells (Ala 27 - Arg 242)	
PURITY:	>95% by SDS – PAGE	
MOL. WEIGHT:	This protein carries a human IgG1 Fc tag at the C-terminus. The protein has a calculated MW of 50.6 kDa. As a result of glycosylation, the protein migrates as 55-66 kDa under reducing (R) condition, and 116-130 kDa under non-reducing (NR) condition (SDS-PAGE).	
ENDOTOXIN LEVEL:	< 1.0 EU per 1µg of protein (determined by LAL method)	
FORM:	Lyophilized	
FORMULATION:	Lyophilized from 0.22 µm filtered solution in 50 mM Tris, 100 mM Glycine, pH 7.5. Normally trehalose is added as protectant before lyophilization.	
STORAGE CONDITIONS:	Store at -20°C. After reconstitution, aliquot and store at -80°C and use within 3 months. Avoid repeated freezing and thawing cycles.	
RECONSTITUTION:	Centrifuge the vial prior to opening. Reconstitute in sterile deionized water to a concentration of 50 µg/ml. Solubilize for 30 to 60 minutes at room temperature with occasional gentle mixing. Carrier protein (0.1% (W/V) HSA or BSA) is recommended for further dilution and long term storage. Do not vortex.	
DESCRIPTION:	Butyrophilin subfamily 1 member A1 (BTN1A1) is also known as BTN, which is a member of the immunoglobulin superfamily and the major protein, associated with fat droplets in the milk. BTN1A1 may have a cell surface receptor function. The human butyrophilin gene is localized in the major histocompatibility complex (MHC) class I region of 6p and may have arisen relatively recently in evolution by the shuffling of exons between 2 ancestral gene families. Furthermore, BTN1A1 regulates the amount of lipids and size of droplets expressed in milk and inhibits the proliferation of CD4 and CD8 T-cells activated by anti-CD3 antibodies, T-cell metabolism and IL2 and IFNG secretion.	



Human BTN1A1, Fc Tag on SDS-PAGE under reducing (R) and no-reducing (NR) conditions

RELATED PRODUCT:

- Human CellExp™ BTN1A1 / Butyrophilin, Human Recombinant (**Cat. No. P1261**)
- Human CellExp™ CD155, human recombinant (**Cat. No. 7462-10, -50**)
- Human CellExp™ CD160/BY55, human recombinant (**Cat. No. 7386-10, -50**)
- Human CellExp™ CD166/ALCAM, human recombinant (**Cat. No. 7437-10, -50**)
- Human CellExp™ CD172A / SIRP, human recombinant (**Cat. No. 7506-10, -50**)
- Human CellExp™ CD33 / SIGLEC-3, human recombinant (**Cat. No. 7370-10, -50**)
- Human CellExp™ CD47, human recombinant (**Cat. No. 7385-10, -50**)
- Human CellExp™ CD55/DAF, human recombinant (**Cat. No. 7432-10, -50**)
- Human CellExp™ CD58 /LFA-3, human recombinant (**Cat. No. 7427-10, -50**)
- Human CellExp™ CD62E/E-Selectin, human recombinant (**Cat. No. 7434-20, -100**)
- Human CellExp™ CD71 / TFRC / TFR, human recombinant (**Cat. No. 7279-10, -50**)
- Human CellExp™ CD273, human recombinant (**Cat. No. 7369-10, -50**)
- Human CellExp™ CD36, human recombinant (**Cat. No. 7371-10, -50**)
- Human CellExp™ CD87, human recombinant (**Cat. No. 7372-20, -100**)

FOR RESEARCH USE ONLY! Not to be used on humans.