

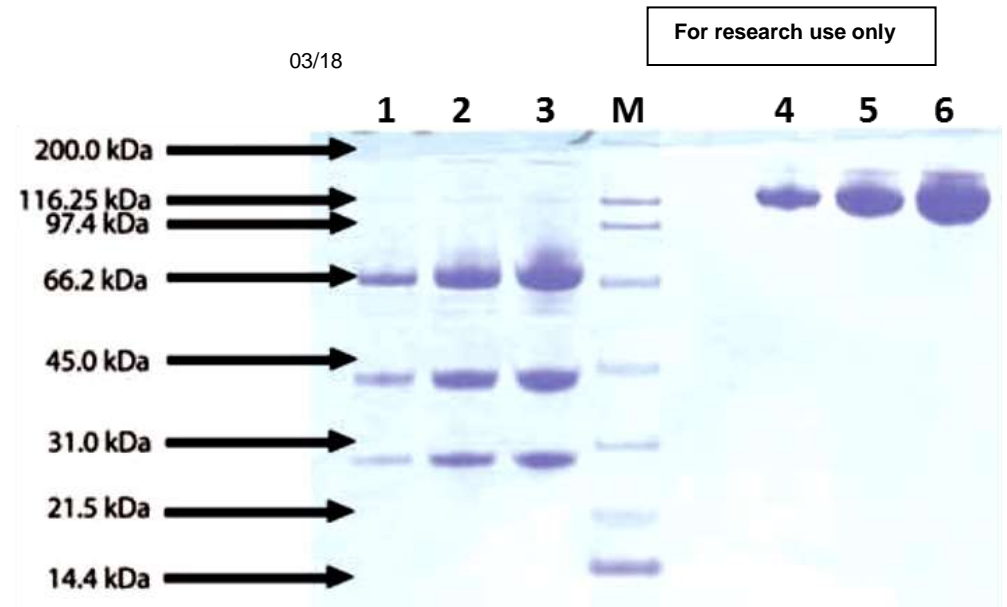
# BioVision Complement C3c, Human Plasma

<b>CATALOG #:</b>	P1271-500 P1271-1000	500 µg 1mg
<b>SOURCE:</b>	Human plasma (Prepared from plasma shown to be non-reactive for HBsAg, anti-HCV, anti-HBc, and negative for anti-HIV 1 & 2 by FDA approved tests.	
<b>MOL. WEIGHT:</b>	138.0 kDa	
<b>PURITY:</b>	≥95% by SDS-PAGE	
<b>FORM:</b>	Liquid	
<b>FORMULATION:</b>	In PBS, pH 7.4	

**STORAGE CONDITIONS:**  
At -80°C. Avoid freeze thaw cycles.

## DESCRIPTION:

Complement C3 (C3) is the most abundant component of the complement system, with levels in human plasma of ~1.2-1.5 mg/ml. It is central to the activation of both the classical and alternative complement pathways, both of which lead to the proteolytic processing of C3 to C3a and C3b. C3 exists as a heterodimer with molecular masses of 115 kDa and 75 kDa, although it is readily processed to create C3a, C3b or C3c depending on the processed state.



SDS-PAGE: 4-12% Bis-Tris NuPAGE gel, Lanes 1-3: 5,10,20mg (Reduced/Heat);  
Lane M: Marker; Lanes 4-6: 5, 10, 20mg (Non-reduced/No heat)

## RELATED PRODUCTS

- C5a, human recombinant (**4995B-20, -100, -1000**)
- C5a (His-Tag), murine recombinant (**4895A-20, -100, -1000**)
- C5a Antibody (**5995-30T, -100**)
- C5a Antibody (**5895-30T, -100**)
- C3aR Antibody (**5543-100**)
- C1 Inhibitor, Human Recombinant (**7120-50, -200**)
- C1 Esterase inhibitor, Human Plasma (**7299-1000**)
- Complement C4c, Human Plasma (**P1272-500, -1000**)
- Complement C5, Human Plasma (**P1273-25, -100**)

**FOR RESEARCH USE ONLY! Not to be used in humans.**