

BioVision

Complement C4c, Human Plasma

CATALOG #: P1272-500 500 µg
P1272-1000 1mg

SOURCE: Human plasma (Prepared from plasma shown to be non-reactive for HBsAg, anti-HCV, anti-HBc, and negative for anti-HIV 1 & 2 by FDA approved tests.

MOL. WEIGHT: 147.0 kDa

PURITY: ≥85% by SDS-PAGE

FORM: Liquid

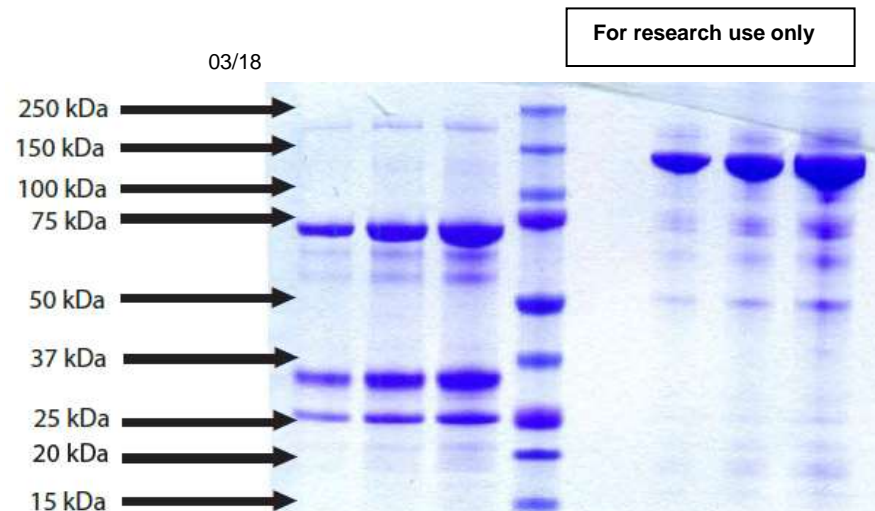
FORMULATION: In PBS, pH 7.4

STORAGE CONDITIONS:

At -80°C. Avoid freeze thaw cycles.

DESCRIPTION:

Complement C4 (C4) plays a central role in both the classical and lectin pathways of complement activation, with levels in human plasma ~0.4 mg/ml. C4 circulates in human plasma as a heterotrimer of 205,000 Da in plasma. The three disulfide-linked chains have molecular weights of 93 (alpha), 75 (beta), and 32 (gamma) kDa. These are readily processed to create C4a, C4b or C4c depending on the processed state. Complement C4c is a degradation product of C4b which is cleaved by C4b/C3b inactivator to yield C4d and C4c. Complement C4c interacts with C1 and C2 to form C3 convertase of the classic activation pathway. Systemic lupus erythematosus (SLE) is often associated with congenital C4 deficiency. Reduced levels of components of the classic pathway (C1, C2, C4, C3) are common after such activation, e.g. in SLE, acute serum sickness and conditions associated with circulating immune complexes.



SDS-PAGE: 4-12% Bis-Tris NuPAGE gel, Lanes 1-3: 5,10,20mg (Reduced/Heat); Lane M: Marker; Lanes 4-6: 5, 10, 20mg (Non-reduced/No heat)

RELATED PRODUCTS

- C5a, human recombinant (**4995B-20, -100, -1000**)
- C5a (His-Tag), murine recombinant (**4895A-20, -100, -1000**)
- C5a Antibody (**5995-30T, -100**)
- C5a Antibody (**5895-30T, -100**)
- C3aR Antibody (**5543-100**)
- C1 Inhibitor, Human Recombinant (**7120-50, -200**)
- C1 Esterase inhibitor, Human Plasma (**7299-1000**)
- Complement C3c, Human Plasma (**P1271-500, -1000**)
- Complement C5, Human Plasma (**P1273-25, -100**)

FOR RESEARCH USE ONLY! Not to be used in humans.