

BioVision

S-100 α Protein, Bovine Brain

03/18

For research use only

CATALOG #: P1275-100 100 μ g

SOURCE: Bovine Brain (Collected from bovine brain tissues collected in the contiguous United States from animals under 30 months of age at a USDA-inspected facility). Animals were inspected ante and post mortem and found free of infectious diseases.

MOL. WEIGHT: 6.5 kDa

PURITY: \geq 95% by SDS-PAGE

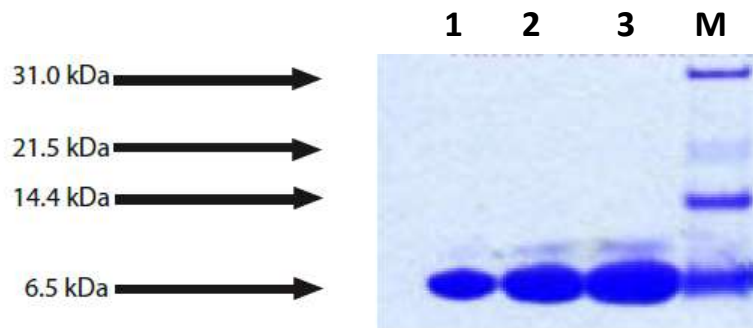
FORM: Lyophilized

RECONSTITUTION: Lot specific, please inquire

STORAGE CONDITIONS:
At -20 C. Avoid freeze thaw cycles.

DESCRIPTION:

Biological Significance: S-100 is a low molecular weight, cytoplasmic, calcium binding protein. It is traditionally found in the brain, heart and muscle tissue. S-100 has two subunits (alpha-chain and beta-chain) and exists in several different forms. The alpha-alpha homodimer is referred to in literature as either the S-100 $\alpha\alpha$ or S-100 $\alpha\alpha$. S-100 protein is expressed from the beginning of lipidogenesis and may act as a factor regulating lipid storage and body fat formation. It can be used as a reliable biochemical marker of human fat cell differentiation and for distinguishing them from the mesenchymal and the fibroblast cells in the human embryonal subcutis.



SDS-PAGE: 4-12% Bis-Tris NuPAGE gel, Lanes 1-3: 5,10,20 μ g (Reduced/Heat); Lane M: Marker

RELATED PRODUCTS

- S100A8 Antibody (Clone IMG48M7C7) (**6196 -100**)
- S100B, Human Recombinant (**P1035-10, -50**)
- S-100 Antibody (**3958-30, -100**)
- Adipogenesis Colorimetric/Fluorometric Assay Kit (**K610-100**)

FOR RESEARCH USE ONLY! Not to be used in humans.