

BioVision

Elastase, Porcine Pancreatic

CATALOG #: P1276-250 250 U

SOURCE: Porcine pancreas (Prepared from Porcine pancreas obtained from healthy animals of US origin and under the care of a registered veterinarian)

MOL. WEIGHT: 25 kDa

PURITY: ≥95% by SDS-PAGE

FORM: Lyophilized

RECONSTITUTION: Lot specific, please inquire

STORAGE CONDITIONS:
At -20°C. Avoid freeze thaw cycles.

DESCRIPTION:

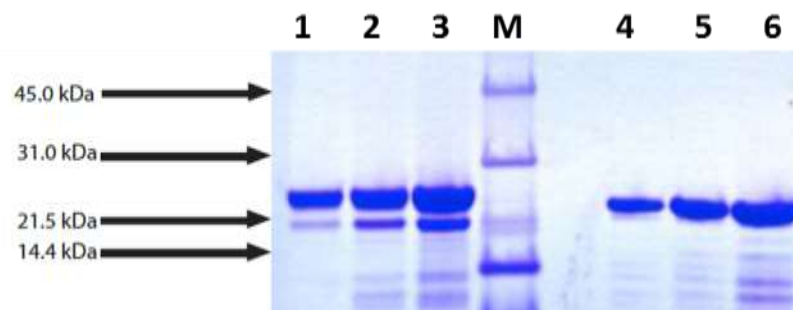
Elastase, like trypsin and chymotrypsin, is a serine protease that also hydrolyses amides and esters. It is produced in the pancreas as an inactive zymogen, pro-elastase, and activated in the duodenum by trypsin. Elastase is distinctive in that it acts upon elastin. This enzyme degrades elastin, collagen, and proteoglycan and has been implicated in the development of pulmonary emphysema and rheumatoid arthritis.

BIOLOGICAL ACTIVITY: Activity is determined by the ability of the enzyme to hydrolyze the substrate Suc-Ala-Ala-Pro-Abu-pNA. One unit is defined as the amount of enzyme that will hydrolyze 1 μmol of the substrate per minute at 25°C.

SPECIFIC ACTIVITY: >50 units/mg protein

03/18

For research use only



SDS-PAGE: 4-12% Bis-Tris NuPAGE gel, Lanes 1-3: 5,10,20μg (Reduced/Heat); Lane M: Marker;; Lanes 4-6, 5,10,20μg (non-reduced/no heat)

RELATED PRODUCTS

- Neutrophil Elastase Inhibitor Screening Kit (Fluorometric)(**K782-100**)
- Neutrophil Elastase Activity Assay Kit (Fluorometric)(**K383-100**)
- Elastase, Human Neutrophil (**4716-100**)
- Elastase Substrate, Fluorogenic (**1975-5**)
- Elastase Inhibitor, SPCK (**1921-5**)
- Elastase Inhibitor (**1922-5**)
- Elastinal (**9629-5, -25**)
- Chymotrypsin, Human Pancreas (**7538-100**)

FOR RESEARCH USE ONLY! Not to be used in humans.