

## Human CellExp™ PSMA / FOLH1, C-His Tag, human recombinant

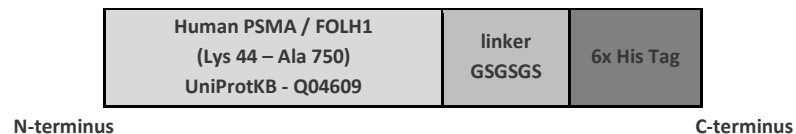
**CATALOG #:** P1304-5 5 µg  
P1304-25 25 µg

**ALTERNATE NAMES:** Prostatespecific membrane antigen; Glutamate carboxypeptidase 2; PSMA; PSM; mGCP; GCPII; FGCP; NAALADase I; cell growth-inhibiting gene 27 protein; Folate hydrolase 1; Folylpoly gamma glutamate carboxypeptidase; glutamate carboxypeptidase II; Membrane glutamate carboxypeptidase; N-acetylated-alpha-linked acidic dipeptidase I; Pteroylpoly-gamma-glutamate carboxypeptidase

**SOURCE:** HEK 293 cells (Lys44 – Ala750, Extracellular Domain)

**PURITY:** ≥ 95% by SDS-PAGE gel

**MOL. WEIGHT:** This protein is fused to 6x His tag at the C-terminus and has a calculated MW of 81 kDa. The protein migrates as ~100 kDa under reducing conditions (SDS-PAGE) due to glycosylation.



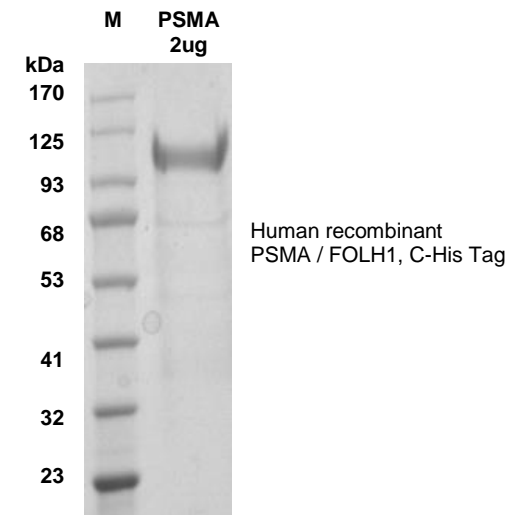
**FORM:** Lyophilized

**FORMULATION:** Lyophilized from filtered PBS (pH 7.4) with Trehalose (5%)

**STORAGE CONDITIONS:** Store at -20°C. After reconstitution, aliquot and store at -20°C or -70°C for up to 3 months. Avoid repeated freeze-thaw cycles.

**RECONSTITUTION:** Centrifuge the vial prior to opening. Reconstitute in PBS (pH 7.4). Do not vortex.

**DESCRIPTION:** Human Prostate Specific Membrane Antigen (PSMA), a tumor marker in prostate cancer encoded by FOLH1 gene, is a surface glycoprotein with high expression in prostate epithelium. PSMA expression level increases in primary and metastatic prostate cancer and the neovasculature of nonprostatic epithelial malignancies. Overexpression of PSMA is correlated with high tumor grade, non-diploid tumors, and advanced tumor stage. PSMA is used as a diagnostic and prognostic indicator of prostate cancer, and as a possible marker for various neurological disorders such as schizophrenia, Alzheimer disease and Huntington disease. It is also recognized as a viable target for cancer therapy.



### RELATED PRODUCTS:

- Prostate Specific Antigen (PSA) Activity Assay Kit (Fluorometric) (**Catalog #: K962**)
- QuickDetect™ Free-PSA (Human) ELISA Kit (**Catalog #: K4410**)
- Glutamate Colorimetric Assay Kit (**Catalog #: K629**)
- Glutamate Dehydrogenase Activity Colorimetric Assay Kit (**Catalog #: K729**)
- Anti-free PSA Antibody (1B4A5) (**Catalog #: A1352**)
- Anti-free PSA Antibody (1D3E6) (**Catalog #: A1351**)

**FOR RESEARCH USE ONLY! Not to be used in humans**