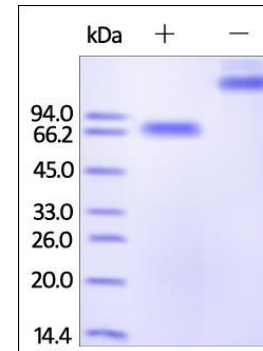


Human CellExp™ CD244/ 2B4/ SLAMF4, Fc Tag, Human Recombinant

CATALOG NO:	P1305-10 10 µg P1305-50 50 µg
ALTERNATE NAMES:	CD244, 2B4, SLAMF4, NKR2B4, NAIL, h2B4
SOURCE:	HEK 293 cells (Cys 22 - Arg 221)
PURITY:	> 95% by SDS – PAGE
MOL. WEIGHT:	The protein has a calculated MW of 48.9 kDa. As a result of glycosylation, the protein migrates as 65-80 kDa under reducing (R) condition, and 130-160 kDa under non-reducing (NR) condition (SDS-PAGE).
ENDOTOXIN LEVEL:	< 1.0 EU per 1µg of protein (determined by LAL method)
FORM:	Lyophilized
FORMULATION:	Lyophilized from 0.22 µm filtered solution in 50 mM Tris, 100 mM Glycine, pH7.5. Normally trehalose is added as protectant before lyophilization.
STORAGE CONDITIONS:	Store at -20°C. After reconstitution, aliquot and store at -80°C and use within 3 months. Avoid repeated freezing and thawing cycles.
RECONSTITUTION:	Centrifuge the vial prior to opening. Reconstitute in sterile deionized water to a concentration of 50 µg/ml. Solubilize for 30 to 60 minutes at room temperature with occasional gentle mixing. Carrier protein (0.1% (W/V) HSA or BSA) is recommended for further dilution and long term storage. Do not vortex.
DESCRIPTION:	Natural killer cell receptor 2B4 is also known as NK cell type 1 receptor protein 2B4 (NKR2B4 or h2B4), SLAM family member 4 (SLAMF4), Signaling lymphocytic activation molecule 4, CD antigen CD244. NKR2B4 CD244 contains two Ig-like (immunoglobulin-like) domains. CD244 is expressed in spleen, PBL, followed by lung, liver, testis and small intestine. CD244 interacts with CD48. Following phosphorylation, CD244 is able to recruit PTPN11/SHP-2 and SH2D1A/SAP. SLAMF4 modulate other receptor-ligand interactions to enhance leukocyte activation. CD244/2B4 is the only heterophilic receptor of SLAM family.
SPECIFIC ACTIVITY:	Immobilized Human CD48, His Tag at 5 µg/mL (100 µL/well) can bind Human 2B4, Fc Tag with a linear range of 0.313-5 µg/mL.

A



B

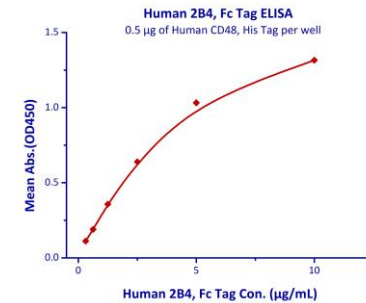


Fig. A. Human 2B4, Fc Tag on SDS-PAGE under reducing (R) and non-reducing (NR) conditions

Fig. B. Immobilized Human CD48, His Tag at 5 µg/mL (100 µL/well) can bind Human 2B4, Fc Tag with a linear range of 0.313-5 µg/mL.

RELATED PRODUCT:

- CD244 (Human) ELISA Kit (**Cat. No. E4545**)
- Anti-CD244 Antibody (2B4.69) (**Cat. No. A1073**)
- Human CellExp™ CD244 / 2B4 / SLAMF4, human recombinant (**Cat. No. 7374**)
- CD244, human recombinant (**Cat. No. 7339**)
- Human CellExp™ CD48 / SLAMF2, Fc Tag, Human Recombinant (**Cat. No. P1243**)
- Human CellExp™ CD48 / BCM1 / SLAMF2, human recombinant (**Cat. No. 7380**)

FOR RESEARCH USE ONLY! Not to be used on humans.

