

Human CellExp™ Prolactin, Human Recombinant

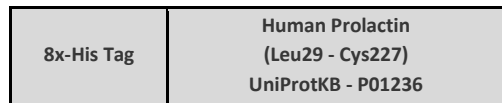
CATALOG NO: P1311-10 10 µg
 P1311-50 50 µg
 P1311-250 250 µg

ALTERNATE NAMES: prolactin, PRL, GHA1, luteotropin

SOURCE: HEK 293 cells (Leu 29 – Cys 227)

PURITY: ≥95% by SDS-PAGE

MOL. WEIGHT: This protein has 199 amino acids (Leu29 - Cys227) with an 8x-His tag at N-terminus and a calculated MW of 24 kDa. The protein migrates to 25 and 27 kDa under reducing condition (SDS-PAGE) due to glycosylation.



N-terminus

C-terminus

FORM: Lyophilized

FORMULATION: Lyophilized from 0.22 µm filtered PBS (pH 7.4) with 5% trehalose

RECONSTITUTION: Centrifuge the vial prior to opening. Reconstitute in sterile PBS (pH 7.4). Do not vortex.

STORAGE CONDITIONS: Store at -20°C. After reconstitution, aliquot and store at -20°C and use within 3 months. Avoid repeated freeze-thaw cycles.

DESCRIPTION: Prolactin is a hormone that is mainly secreted by lactotroph cells of the anterior pituitary gland. It is involved in many biological processes including lactation, metabolism, regulation of the immune system and reproduction. The major isoform acts via its membrane receptor, the prolactin receptor (PRL-R), which is a member of the haematopoietic cytokine superfamily. One of the prolactin isoforms has received particular attention as a result of its recently discovered inhibitory effects on angiogenesis and tumorigenesis. The discovery of multiple extrapituitary sites of prolactin secretion also increases the range of known functions of this hormone. Prolactin and its receptor serve multiple physiological and pathological roles in human pathophysiology.

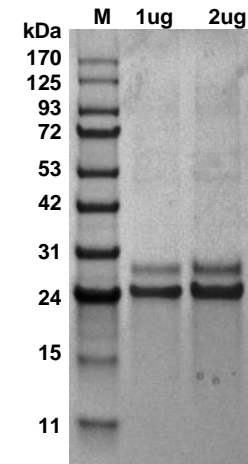


Fig. SDS-PAGE (4-20%) of Prolactin: Recombinant prolactin loaded under reducing condition and stained with Coomassie Blue. **Lane M-** Protein marker, **Lane 1, 2-** Recombinant prolactin

RELATED PRODUCTS:

- Prolactin, rat recombinant (**Cat. No. 4689**)
- Prolactin, human recombinant (**Cat. No. 4687**)
- Prolactin, murine recombinant (**Cat. No. 4688**)
- Prolactin Receptor, human recombinant (**Cat. No. 4989**)
- Prolactin Receptor, rat recombinant (**Cat. No. 4991**)
- Prolactin (mouse/rat) ELISA Kit (**Cat. No. K4688**)
- Prolactin (human) ELISA Kit (**Cat. No. K4687**)
- Prolactin Antibody (**Cat. No. 5689**)
- Prolactin Antibody (**Cat. No. 5688**)
- Prolactin Antibody (**Cat. No. 6649**)

FOR RESEARCH USE ONLY! Not to be used on humans.

