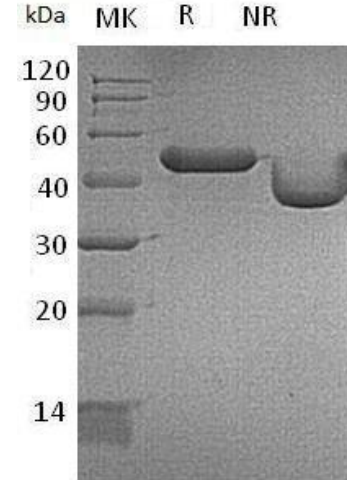


Human CellExp™ CHI3L3, Mouse Recombinant

CATALOG NO:	P1312-10	10 µg
ALTERNATE NAMES:	Chitinase-Like Protein 3, YM1/ECF-L, CHI3L3	
SOURCE:	HEK 293 cells (Tyr22-Tyr398)	
PURITY:	> 95% by SDS – PAGE	
TAG:	This protein carries a polyhistidine tag at the C-terminus.	
ENDOTOXIN LEVEL:	< 1.0 EU per 1µg of protein (determined by LAL method)	
FORM:	Lyophilized	
FORMULATION:	Lyophilized from a 0.2 µm filtered solution of PBS, pH7.4.	
STORAGE CONDITIONS:	Store at -20°C. After reconstitution, aliquot and store at -20°C and use within 3 months. Avoid repeated freezing and thawing cycles.	
RECONSTITUTION:	Centrifuge the vial prior to opening. It is not recommended to reconstitute to a concentration less than 100 µg/ml. Dissolve the lyophilized protein in ddH ₂ O. Do not vortex.	
DESCRIPTION:	Chitinase 3-like 3 gene, also known as YM1 and ECF-L, encodes a precursor protein with 398 amino acid residues with a 21 residue signal sequence. Chitinase 3-like 3 protein is a lectin that binds saccharides with a free amino group, such as glucosamine or galactosamine. Binding to oligomeric saccharides is much stronger than binding to mono- or disaccharides. Also binds heparin and G1cN oligomers, and is produced primarily by macrophages during inflammation. It has chemotactic activity for T-lymphocytes, bone marrow cells and eosinophils.	



CHI3L3, Mouse Recombinant

RELATED PRODUCTS:

- Calmodulin, human recombinant (**Cat. No. 7838**)
- Recombinant E. coli, D-lactate Dehydrogenase (**Cat. No. P1053**)
- Phosphogluconate dehydrogenase, human recombinant (**Cat. No. P1051**)
- Human Recombinant Alpha-Enolase (**Cat. No. 6363**)
- Human Recombinant LDHA (**Cat. No. 6347**)

FOR RESEARCH USE ONLY! Not to be used on humans.