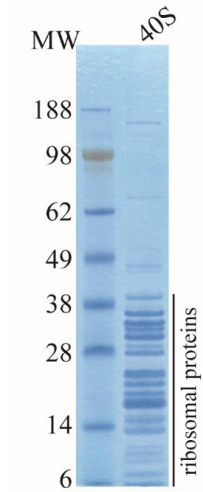


40S ribosomal subunit, Rabbit Reticulocytes

CATALOG NO:	P1313-200	200 µg
CONCENTRATION:	4.5 µg/µl	
SOURCE:	Rabbit Reticulocytes	
MOL. WEIGHT:	~1.2 MDa	
PURITY:	≥95% by SDS-PAGE	
FORM:	Liquid	
FORMULATION:	In 20 mM Tris-HCl pH 7.5, 100 mM KCl, 2.5 mM MgCl ₂ , 2 mM DTT and 0.25 M sucrose	
STORAGE CONDITIONS:	Store at -70°C. For long term storage aliquot and store at -70°C.	
DESCRIPTION:	The mammalian small ribosomal subunit (40S) is the smaller subunit of the mammalian 80S ribosomes, with the other major component being the large ribosomal subunit (60S). The 40S subunit consists of a 18S ribosomal RNA and ~32 ribosomal proteins. The 40S subunit contains the decoding center which monitors the complementarity of tRNA and mRNA in protein translation.	



4-12% Bis-Tris NuPAGE gel

40S ribosomal subunit from Rabbit Reticulocytes

RELATED PRODUCTS:

- 60S ribosomal subunit, Rabbit Reticulocytes (**Cat. No. P1314**)
- eEF1A, Rabbit Reticulocytes (**Cat. No. P1315**)
- eEF2, Rabbit Reticulocytes (**Cat. No. P1316**)
- eIF2, Rabbit Reticulocytes (**Cat. No. P1317**)
- eIF3, Rabbit Reticulocytes (**Cat. No. P1318**)

FOR RESEARCH USE ONLY! Not to be used on humans.