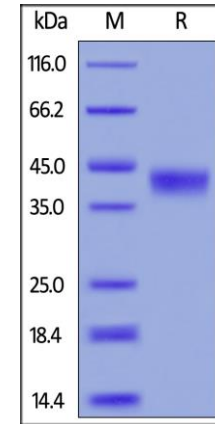


## Human CellExp™ CD38, Mouse Recombinant

<b>CATALOG NO:</b>	P1338-10            10 µg P1338-50            50 µg
<b>ALTERNATE NAMES:</b>	CD38, T10, cADPr hydrolase 1
<b>SOURCE:</b>	HEK 293 cells (Leu 45 - Thr 304)
<b>PURITY:</b>	> 90% by SDS – PAGE
<b>MOL. WEIGHT:</b>	This protein carries a polyhistidine tag at the C-terminus. The protein has a calculated MW of 31.7 kDa. The protein migrates as 38-45 kDa under reducing (R) condition (SDS-PAGE) due to glycosylation.
<b>ENDOTOXIN LEVEL:</b>	< 1.0 EU per 1µg of protein (determined by LAL method)
<b>FORM:</b>	Lyophilized
<b>FORMULATION:</b>	Lyophilized from 0.22 µm filtered solution in 50 mM MES, 100 mM NaCl, pH 6.5. Generally Mannitol or Trehalose is added as a protectant before lyophilization.
<b>STORAGE CONDITIONS:</b>	Store at -20°C. After reconstitution, aliquot and store at -80°C and use within 3 months. Avoid repeated freezing and thawing cycles.
<b>RECONSTITUTION:</b>	Centrifuge the vial prior to opening. Reconstitute in sterile deionized water to a concentration of 50 µg/ml. Solubilize for 30 to 60 minutes at room temperature with occasional gentle mixing. Carrier protein (0.1% (W/V) HSA or BSA) is recommended for further dilution and long term storage. Do not vortex.
<b>DESCRIPTION:</b>	CD antigen CD38 is also known as ADP-ribosyl cyclase 1, which belongs to the ADP-ribosyl cyclase family. CD38 is expressed at high levels in pancreas, liver, kidney, brain, testis, ovary, placenta, malignant lymphoma and neuroblastoma. CD38 is a multifunctional ectoenzyme that catalyzes the synthesis and hydrolysis of cyclic ADP-ribose (cADPR) from NAD <sup>+</sup> to ADP-ribose. These reaction products are essential for the regulation of intracellular Ca <sup>2+</sup> . The loss of CD38 function is associated with impaired immune responses, metabolic disturbances, and behavioral modifications. The CD38 protein is a marker of cell activation. It has been connected to HIV infection, leukemias, myelomas, solid tumors, type II diabetes mellitus and bone metabolism. CD38 has been used as a prognostic marker in leukemia.



Mouse CD38 on SDS-PAGE under reducing (R) condition. The gel was stained overnight with Coomassie Blue.

### RELATED PRODUCT:

- Human CellExp™ TNFRSF10B /TRAILR2, human recombinant (Cat. No. 7448-10)
- Human CellExp™ CD155, human recombinant (Cat. No. 7462-10, -50)
- Human CellExp™ CD160/BY55, human recombinant (Cat. No. 7386-10, -50)
- Human CellExp™ CD166/ ALCAM, human recombinant (Cat. No. 7437-10, -50)
- Human CellExp™ CD172A / SIRP, human recombinant (Cat. No. 7506-10, -50)
- Human CellExp™ CD33 / SIGLEC-3, human recombinant (Cat. No. 7370-10, -50)
- Human CellExp™ CD47, human recombinant (Cat. No. 7385-10, -50)
- Human CellExp™ CD55/DAF, human recombinant (Cat. No. 7432-10, -50)
- Human CellExp™ CD58 /LFA-3, human recombinant (Cat. No. 7427-10, -50)
- Human CellExp™ CD62E/E-Selectin, human recombinant (Cat. No. 7434-20, -100)
- Human CellExp™ CD71 / TFRC / TFR, human recombinant (Cat. No. 7279-10, -50)
- Human CellExp™ CD273, human recombinant (Cat. No. 7369-10, -50)
- Human CellExp™ CD36, human recombinant (Cat. No. 7371-10, -50)
- Human CellExp™ CD87, human recombinant (Cat. No. 7372-20, -100)

**FOR RESEARCH USE ONLY! Not to be used on humans.**