

Human CellExp™ Siglec-15, Human Recombinant

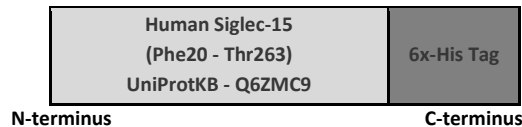
CATALOG NO: P1343-10 10 µg
P1343-50 50 µg

ALTERNATE NAMES: Sialic acid-binding immunoglobulin (Ig)-like lectin 15, CD33 antigen-like 3, CD33 molecule-like 3, CD33L3

SOURCE: HEK 293 cells (Phe20 - Thr263)

PURITY: >95% by SDS-PAGE

MOL. WEIGHT: The protein is fused with 6xHis tag at the C-terminus. The protein has a calculated MW of 27 kDa. The protein migrates as ~35 kDa under reducing condition (SDS-PAGE) due to glycosylation.



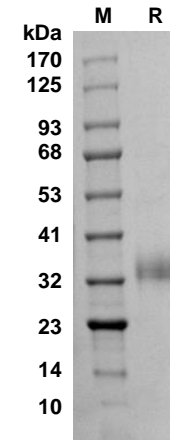
FORM: Lyophilized

FORMULATION: Lyophilized from 0.22 µm filtered PBS (pH 7.4), 500mM NaCl with 5% trehalose.

STORAGE CONDITIONS: Store at -20°C. After reconstitution, aliquot and store at -20°C and use within 3 months. Avoid repeated freeze-thaw cycles.

RECONSTITUTION: Centrifuge the vial prior to opening. Reconstitute in sterile PBS, pH 7.4 up to 0.2µg/µl. Do not vortex.

DESCRIPTION: Siglec-15 is a transmembrane glycoprotein of the siglecs family that participates in the immune regulatory systems through the recognition of their glycan ligands. Siglecs, short for sialic acid-binding immunoglobulin (Ig)-like lectins, are primarily expressed on the surface of immune cells and differentially control innate and adaptive immune responses. Mature human Siglec-15 consists of a 244 amino acid (aa) extracellular domain (ECD, Phe20 - Thr263) with two Ig-like domains, a 21 aa transmembrane segment (264-284), and a 44 aa cytoplasmic domain (285-328). Siglecs are attractive therapeutic targets because of their cell type-specific expression pattern, endocytic properties, high expression on certain lymphomas/leukemia, and ability to modulate receptor signaling. Because Siglec-15 is critical for proper development and function of osteoclasts, anti-Siglec-15 antibodies have therapeutic potential for treatment of osteoporosis.



SDS-PAGE (4-20%) of Recombinant Siglec-15: Recombinant protein (2µg) is loaded under reducing condition and stained with Coomassie Blue.

RELATED PRODUCT:

- Human CellExp™ Siglec-2/CD22 isoform beta, Human Recombinant (Cat No. P1171)
- Human CellExp™ Siglec-2/CD22, Mouse Recombinant (Cat No. P1330)
- Human CellExp™ CD33/SIGLEC-3, Fc Tag, Human Recombinant (Cat No. P1334)
- Human CellExp™ CD33/SIGLEC-3, human recombinant (Cat No. 7370)
- Human CellExp™ Siglec-6/CD327 Protein, Fc Tag (Cat No. 7882)

FOR RESEARCH USE ONLY! Not to be used on humans.

