

Human CellExp™ Her2 / ErbB2, Mouse Recombinant

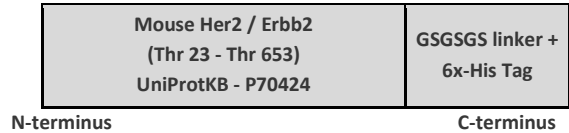
CATALOG #: P1345-10 10 µg
P1345-50 50 µg

ALTERNATE NAMES: ERBB2, CD340, HER-2/neu, HER2, MLN19, NEU, NGL, TKR1

SOURCE: HEK 293 cells (Thr 23 - Thr 653)

PURITY: > 95% by SDS - PAGE

MOL. WEIGHT: ~93 kDa (C terminal 6xHis tag)

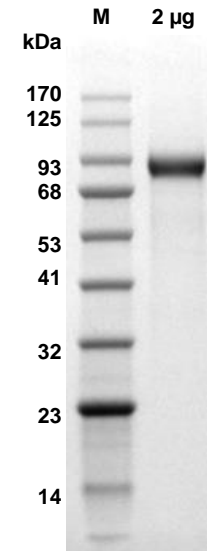


FORMULATION: Lyophilized from 0.22 µm filtered PBS, pH 7.4 with 5% trehalose

RECONSTITUTION: Centrifuge the vial prior to opening. Reconstitute in sterile PBS (pH 7.4). Do not vortex.

STORAGE CONDITIONS: Store at -20°C. After reconstitution, aliquot and store at -80°C and use within 3 months. Avoid repeated freezing and thawing cycles

DESCRIPTION:
 Mouse Her2/ErbB2 includes the extracellular domain from the full length protein. Her2 is a tyrosine kinase that is widely expressed in epithelial cells and the synaptic sites of muscle fibers. It forms heterodimer with EGFR (ErbB1), ERBB3 and ERBB4 to form high affinity signaling complexes. Her2 has been found to be over-expressed in a large number of breast carcinomas. Approximately 30% of breast cancers have amplifications of the HER2 gene or overexpression of its protein product. Her2 also plays roles in development, communication at the neuromuscular junction and regulation of cell growth and differentiation.



SDS-PAGE (4-20%) of mouse Her2 / ErbB2: 2 µg of the mouse recombinant Her2 is loaded under reducing conditions and stained with Coomassie Blue. Lane M: Molecular weight marker

RELATED PRODUCTS:

- Human CellExp™ human Her2/ErbB2, Extracellular Domain (Cat. No. P1160)
- Human CellExp™ ErbB2 / HER2 / CD340, human recombinant (Cat. No. 7397)
- HER2, Active, Human Recombinant (Cat. No. 8011)
- HER2/ErbB2 (Human) ELISA Kit (Cat. No. E4357)
- Anti- Her2/Neu Antibody (IHC002) (Cat. No. A1519)
- Anti-HER2 (Trastuzumab), humanized Antibody (Cat. No. A1046)
- Anti-HER2 (c-erbB-2), Rabbit Monoclonal Antibody (Cat. No. A1134)
- HER2, Active (Cat. No. 7762)
- BioSim™ anti-Trastuzumab (Herceptin®) (Human) ELISA Kit ((Cat. No. E4386)
- BioSim™ Trastuzumab (Herceptin®)(Human) ELISA Kit Catalog (Cat. No. E4376)

FOR RESEARCH USE ONLY! Not to be used in humans.

