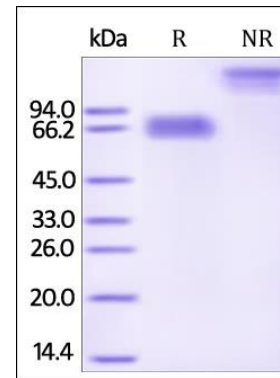


Human CellExp™ Mesothelin / MSLN, Fc Tag, Human Recombinant

CATALOG NO:	P1350-10	10 µg
	P1350-50	50 µg
ALTERNATE NAMES:	MSLN, Mesothelin, MPF	
SOURCE:	HEK 293 cells (Glu 296 - Gly 580)	
PURITY:	> 95% by SDS – PAGE	
MOL. WEIGHT:	This protein carries a human IgG1 Fc tag at the N-terminus. The protein has a calculated MW of 59.6 kDa. As a result of glycosylation, the protein migrates as 60-68 kDa under reducing (R) condition, and 120-130 kDa under non-reducing (NR) condition (SDS-PAGE).	
ENDOTOXIN LEVEL:	< 1.0 EU per 1µg of protein (determined by LAL method)	
FORM:	Lyophilized	
FORMULATION:	Lyophilized from 0.22 µm filtered solution in PBS, pH7.4. Normally trehalose is added as protectant before lyophilization.	
STORAGE CONDITIONS:	Store at -20°C. After reconstitution, aliquot and store at -80°C and use within 3 months. Avoid repeated freezing and thawing cycles.	
RECONSTITUTION:	Centrifuge the vial prior to opening. Reconstitute in sterile deionized water to a concentration of 50 µg/ml. Solubilize for 30 to 60 minutes at room temperature with occasional gentle mixing. Carrier protein (0.1% (W/V) HSA or BSA) is recommended for further dilution and long term storage. Do not vortex.	
DESCRIPTION:	Mesothelin (MSLN) is also known as CAK1 antigen, Pre-pro-megakaryocyte-potentiating factor, which belongs to the mesothelin family. Mesothelin / MSLN can be proteolytically cleaved into the following two chains by a furin-like convertase: Megakaryocyte-potentiating factor (MPF) and the cleaved form of mesothelin. Both MPF and the cleaved form of mesothelin are N-glycosylated. Mesothelin / MSLN can interact with MUC16. The membrane-anchored forms of MSLN may play a role in cellular adhesion. MPF potentiates megakaryocyte colony formation in vitro.	
SPECIFIC ACTIVITY:	Immobilized Human Mesothelin, Fc Tag at 0.5 µg/mL (100 µL/well) can bind Anti-Human MSLN Mab with a linear range of 0.8-3 ng/mL	

A



B

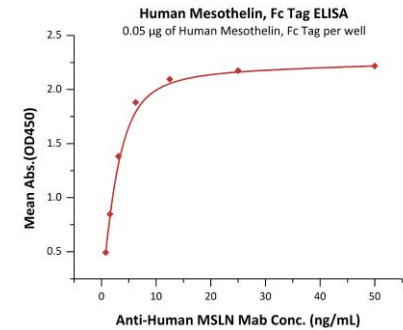


Fig. A. Human Mesothelin (aa 296-580), Fc Tag on SDS-PAGE under reducing (R) condition.

Fig. B. Immobilized Human Mesothelin, His Tag at 0.5 µg/mL (100 µL/well) can bind Anti-Human MSLN Mab with a linear range of 0.1-2 ng/mL

RELATED PRODUCT:

- Human CellExp™ TNFRSF10B /TRAILR2, human recombinant (Cat. No. 7448-10)
- Human CellExp™ CD155, human recombinant (Cat. No. 7462-10, -50)
- Human CellExp™ CD160/BY55, human recombinant (Cat. No. 7386-10, -50)
- Human CellExp™ CD166/ ALCAM, human recombinant (Cat. No. 7437-10, -50)
- Human CellExp™ CD172A / SIRP, human recombinant (Cat. No. 7506-10, -50)
- Human CellExp™ CD33 / SIGLEC-3, human recombinant (Cat. No. 7370-10, -50)
- Human CellExp™ CD47, human recombinant (Cat. No. 7385-10, -50)
- Human CellExp™ CD55/DAF, human recombinant (Cat. No. 7432-10, -50)
- Human CellExp™ CD58 /LFA-3, human recombinant (Cat. No. 7427-10, -50)
- Human CellExp™ CD62E/E-Selectin, human recombinant (Cat. No. 7434-20, -100)
- Human CellExp™ CD71 / TFRC / TFR, human recombinant (Cat. No. 7279-10, -50)
- Human CellExp™ CD273, human recombinant (Cat. No. 7369-10, -50)
- Human CellExp™ CD36, human recombinant (Cat. No. 7371-10, -50)
- Human CellExp™ CD87, human recombinant (Cat. No. 7372-20, -100)

FOR RESEARCH USE ONLY! Not to be used on humans.