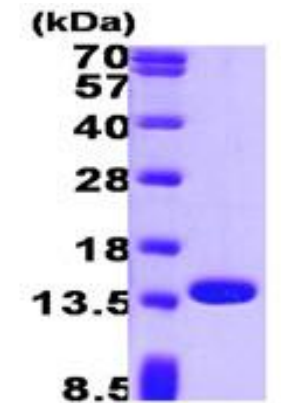


Profilin 1, Human Recombinant

CATALOG NO:	P1365-10	10 µg
	P1365-50	50 µg
ALTERNATE NAMES:	Epididymis tissue protein Li 184a, PFN1	
CONCENTRATION:	1 mg/ml (determined by Bradford assay)	
SOURCE:	<i>E.coli</i> (1-140 aa)	
PURITY:	>95% by SDS-PAGE	
ENDOTOXIN LEVEL:	< 1.0 EU per 1 µg of protein (determined by LAL method)	
MOL. WEIGHT:	15.0 kDa (140aa), confirmed by MALDI-TOF	
FORM:	Liquid	
FORMULATION:	In 20 mM Tris-HCl buffer (pH8.0) containing, 10% glycerol	
STORAGE CONDITIONS:	Can be stored at +4C short term (1-2 weeks). For long term storage, aliquot and store at -20C or -70C. Avoid repeated freezing and thawing cycles.	
SEQUENCE:	MAGWNYIDN LMADGTCQDA AIVGYKDSPS VWAAVPGKTF VNITPAEVLV LVGKDRSSFY VNGLTLGGQK CSVIRDSLLQ DGEFSMDLRT KSTGGAPTFN VTVTKTDKTL VLLMGKEGVH GGLINKKCYE MASHLRSSQY	
DESCRIPTION:	Profilin1 is a ubiquitous actin monomer-binding protein belonging to the profilin family. This protein significantly enhances skin wound healing <i>in-vitro</i> and <i>in-vivo</i> that may be mediated by purinergic receptors. It is also active in endothelial cell migration and vessel sprouting. It is thought to regulate actin polymerization in response to extracellular signals. Recombinant Profilin1 protein was expressed in <i>E.coli</i> and purified by using conventional chromatography techniques	



15% SDS-PAGE (3µg)

Human recombinant Profilin 1

RELATED PRODUCT:

- Profilin-1 Antibody (Cat. No. 3306)
- GFAP, Human Recombinant (Cat. No. p1364)
- Human CellExp™ CaM Kinase, Human Recombinant (Cat. No. P1320)

FOR RESEARCH USE ONLY! Not to be used on humans.