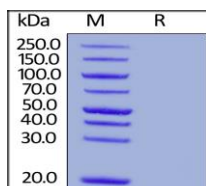


# Apolipoprotein A-II / APOA2, Human Recombinant

<b>CATALOG #:</b>	P1383-50 P1383-10
<b>AMOUNT:</b>	50 µg 10 µg
<b>ALTERNATE NAMES:</b>	Apolipoprotein A-II, APOA2, Apo-AII, ApoA-II, Apolipoprotein A2
<b>MOL. WT.</b>	This protein carries a 6x His tag at the C-terminus. The protein has a calculated MW of 11.2 kDa. The protein migrates as 11 kDa and 13 kDa under reducing (R) condition (SDS-PAGE) due to glycosylation.
<b>SOURCE:</b>	<i>E.coli</i>
<b>PURITY:</b>	>90% as determined by SDS-PAGE.
<b>ENDOTOXIN:</b>	Less than 1.0 EU per µg by the LAL method.
<b>FORM:</b>	Lyophilized
<b>FORMULATION:</b>	Lyophilized from 0.22 µm filtered solution in PBS, pH7.4. Normally trehalose is added as protectant before lyophilization.
<b>RECONSTITUTION:</b>	Centrifuge the vial prior to opening. Reconstitute in sterile deionized water to a concentration of 100 µg/ml. Do not vortex. It is recommended to store at -20°C.
<b>STORAGE CONDITIONS:</b>	Store at -20°C. After reconstitution, aliquot and store at -20°C and use within 3 months. Avoid repeated freezing and thawing cycles.
<b>DESCRIPTION:</b>	Apolipoprotein A-II(APO-A2) stabilize HDL (high density lipoprotein) structure by its association with lipids and affect the HDL metabolism. It is produced by the liver and is involved in cholesteryl ester formation and cholesterol transport from tissues to the liver. Recent studies have established the interaction between APOA2 -256T>C polymorphism and dietary saturated fatty acids intake in relation to obesity on healthy individuals. The significant interaction between APOA2-saturated fatty acids intake and body mass index (BMI).
<b>AMINO ACID SEQUENCE:</b>	AA Ala 19 - Gln 100



Gentaur Europe BVBA Voorstraat 49, 1910 Kampenhout BELGIUM  
 Tel 0032 16 58 90 45 [info@gentaur.com](mailto:info@gentaur.com)



Human Apolipoprotein A-II, His Tag on SDS-PAGE under reducing (R) condition.

## RELATED PRODUCTS:

Apolipoprotein All, Human Plasma (7281)  
 Human CellExp™ ApoA-1, human recombinant (7403)

**FOR RESEARCH USE ONLY! Not to be used on humans.**