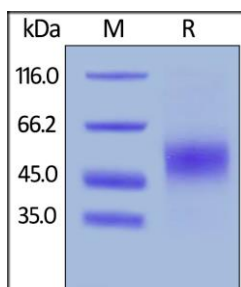


Human CellExp™ GFR alpha-like, Human Recombinant

CATALOG NO:	P1386-10 10 µg P1386-50 50 µg
ALTERNATE NAMES:	GFR alpha like, GFR alpha-like, GFRAL, GRAL
MOL. WT.	This protein carries a polyhistidine tag at the C-terminus. The protein has a calculated MW of 39.7 kDa. The protein migrates as 45-60 kDa under reducing (R) condition (SDS-PAGE) due to glycosylation.
SOURCE:	HEK 293 cells
PURITY:	>95% as determined by SDS-PAG
ENDOTOXIN:	Less than 1.0 EU per µg by the LAL method
FORM:	Lyophilized
FORMULATION:	Lyophilized from 0.22 µm filtered solution in PBS, pH7.4. Normally trehalose is added as protectant before lyophilization.
RECONSTITUTION:	Centrifuge the vial prior to opening. Reconstitute in sterile deionized water to a concentration of 100 µg/ml. Do not vortex. It is recommended to store at -20°C.
STORAGE CONDITIONS:	Store at -20°C. After reconstitution, aliquot and store at -20°C and use within 3 months. Avoid repeated freezing and thawing cycles. -20°C
DESCRIPTION:	GFR alpha-like is also known as GDNF family receptor alpha-like, GFRAL, C6orf144, UNQ9356, PRO34128. Growth differentiation factor-15 (GDF15) is a circulating protein that has been implicated in multiple biological processes, including energy homeostasis, body weight regulation, and cachexia driven by cancer and chronic disease. GDNF family receptor α-like (GFRAL) was recently identified as the neuronal brainstem receptor responsible for mediating the anorectic actions of GDF15. Brainstem-restricted receptor for GDF15 which regulates food intake, energy expenditure and body weight in response to metabolic and toxin-induced stresses. Upon interaction with its ligand, GDF15, interacts with RET and induces cellular signaling through activation of MAPK- and AKT- signaling pathways.
AMINO ACID SEQUENCE:	AA Ser 19 - Glu 351



Gentaur Europe BVBA Voorstraat 49, 1910 Kampenhout BELGIUM
 Tel 0032 16 58 90 45 info@gentaur.com



Human GFR alpha-like, His Tag on SDS-PAGE under reducing (R) condition.

RELATED PRODUCTS:

GFRalpha-1 Antibody (6201)
 Human CellExp™ GFRA1 /GDNFRA, human recombinant (7469)

FOR RESEARCH USE ONLY! Not to be used on humans.

