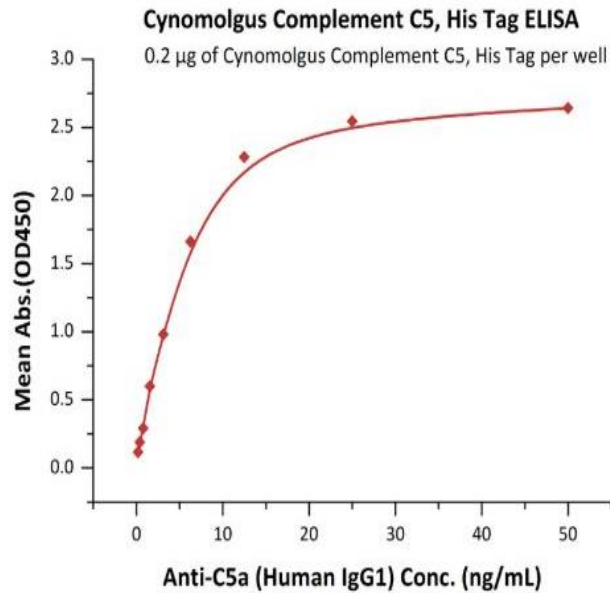


Human CellExp™ Complement C5, Cynomolgus Recombinant

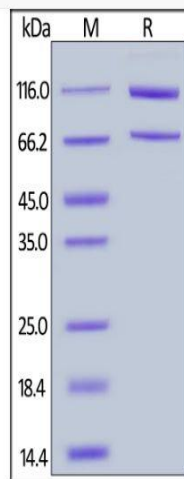
CATALOG NO:	P1414-100 100 µg
ALTERNATE NAMES:	Complement C5,C5,CPAMD4
MOL. WT.	This protein carries a polyhistidine tag at the C-terminus. The mature form of Complement C5 is a disulfide-linked heterodimer composed of proteolytically cleaved α and β chain. Each α and β chain has a calculated MW of 73.3 kDa (β chain) and 114.9 kDa (α chain). The protein migrates as 70 kDa (β chain) and 116 kDa (α chain) under reducing (R) condition (SDS-PAGE) due to glycosylation.
SOURCE:	human 293 cells (HEK293)
PURITY:	> 95% by SDS-PAGE
ENDOTOXIN:	Less than 1.0 EU per µg by the LAL method
FORM:	Lyophilized
FORMULATION:	Lyophilized from 0.22 µm filtered solution in PBS, pH7.4. Normally trehalose is added as protectant before lyophilization.
RECONSTITUTION:	Reconstitute in sterile deionized water to the desired protein concentration.
SPECIFIC ACTIVITY:	Immobilized Cynomolgus Complement C5, His Tag at 2 µg/ml (100 µl/well) can bind Anti-C5a (Human IgG1) with a linear range of 0.4-6 ng/ml.
STORAGE CONDITIONS:	Store at -20 °C. After reconstitution, aliquot and store at -70 °C and use within 3 months. Avoid repeated freezing and thawing cycles.
DESCRIPTION:	Derived from proteolytic degradation of complement C5, C5 anaphylatoxin is a mediator of local inflammatory process. C5 precursor is first processed by the removal of 4 basic residues, forming two chains, beta and alpha, linked by a disulfide bond. C5 convertase activates C5 by cleaving the alpha chain, releasing C5a anaphylatoxin and generating C5b (beta chain + alpha' chain). Activation of C5 by a C5 convertase initiates the spontaneous assembly of the late complement components, C5-C9, into the membrane attack complex. C5b has a transient binding site for C6. The C5b-C6 complex is the foundation upon which the lytic complex is assembled. The C5a anaphylatoxin interacts with C5AR1 and tick complement inhibitor. C5a is also a potent chemokine which stimulates the locomotion of polymorphonuclear leukocytes and directs their migration toward sites of inflammation.
AMINO ACID SEQUENCE:	AA Gln 19 - Cys 1676

Gentaur Europe BVBA Voortstraat 49, 1910 Kampenhout BELGIUM
Tel 0032 16 58 90 45 info@gentaur.com





Immobilized Cynomolgus Complement C5, His Tag at 2 µg/mL (100 µL/well) can bind Anti-C5a (Human IgG1) with a linear range of 0.4-6 ng/mL.



Cynomolgus Complement C5, His Tag on SDS-PAGE under reducing (R) condition.

RELATED PRODUCTS:

- C5a Antibody (Cat# 5995)
- C5a Antibody (Cat# 5895)

Gentaur Europe BVBA Voorstraat 49, 1910 Kampenhout BELGIUM
Tel 0032 16 58 90 45 info@gentaur.com



FOR RESEARCH USE ONLY! Not to be used on humans.