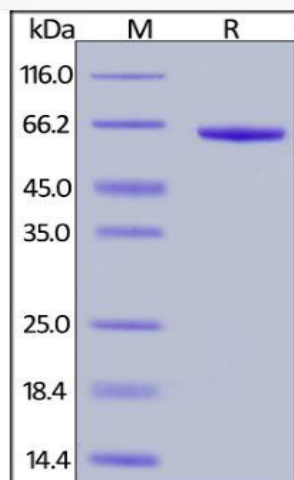
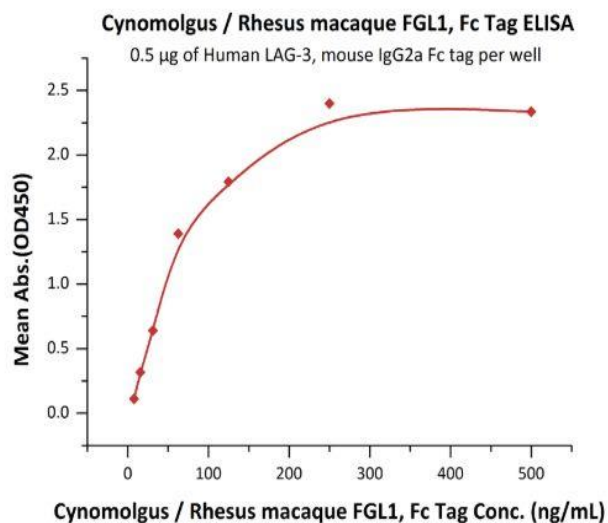


# Human CellExp™ FGL1, Fc Tag, Cynomolgus / Rhesus macaque recombinant

<b>CATALOG NO:</b>	P1418-10 10 µg P1418-50 50 µg
<b>ALTERNATE NAMES:</b>	FGL1, Hepassocin, HP-041, HFREP-1, LFIRE-1, HFREP1
<b>MOL. WT.</b>	This protein carries a human IgG1 Fc tag at the C-terminus. The protein has a calculated MW of 60.4 kDa. The protein migrates as 65 kDa under reducing (R) condition (SDS-PAGE) due to glycosylation.
<b>SOURCE:</b>	HEK 293 cells
<b>PURITY:</b>	>95% SDS-PAGE
<b>ENDOTOXIN:</b>	Less than 1.0 EU per µg by the LAL method.
<b>FORM:</b>	Lyophilized
<b>FORMULATION:</b>	Lyophilized from 0.22 µm filtered solution in 50 mM Tris, 100 mM Glycine, 25 mM Arginine, 150 mM NaCl, pH7.5. Normally trehalose is added as protectant before lyophilization.
<b>RECONSTITUTION:</b>	Reconstitute in sterile deionized water to the desired protein concentration.
<b>SPECIFIC ACTIVITY:</b>	Immobilized Human LAG-3, mouse IgG2a Fc tag at 5 µg/ml (100 µl/well) can bind Cynomolgus / Rhesus macaque FGL1, Fc Tag with a linear range of 8-125 ng/ml.
<b>STORAGE CONDITIONS:</b>	Store at -20°C. After reconstitution, aliquot and store at -70°C and use within 3 months. Avoid repeated freezing and thawing cycles.
<b>DESCRIPTION:</b>	Fibrinogen-like protein 1 (FGL1) is also known as HP-041, Hepassocin, HFREP-1, LFIRE-1. The protective effect of fibrinogen-like protein 1 (FGL1) in liver injury has previously been reported. However, studies have shown that FGL1 may be a predictor of GC patients and a target for GC therapy. Immunocytochemical studies revealed that fgl1 selectively binds to defective spermatozoa in the cauda epididymidis. Northern blot analysis and in situ hybridization demonstrated the high expression of fgl1 in the principal cells of the proximal cauda epididymidis. Immunofluorescence analysis using mouse fibrotic lung tissues suggested that fibrotic regions showed increased expressions of Gtse1 and Fgl1, Gtse1 and Fgl1 are suggested to be novel targets for radiation-induced lung fibrosis.
<b>AMINO ACID SEQUENCE:</b>	AA Leu 23 - Ile 312



Cynomolgus / Rhesus macaque FGL1, Fc Tag on SDS-PAGE under reducing (R) condition.



Immobilized Human LAG-3, mouse IgG2a Fc tag at 5 µg/ml (100 µl/well) can bind Cynomolgus / Rhesus macaque FGL1, Fc Tag with a linear range of 8-125 ng/ml.

**RELATED PRODUCTS:**

- Ficolin-1 Antibody (Cat# 3852)
- Anti-Fibrinogen Antibody (Cat# A1708)
- ANGPTL3 (human) Serum ELISA Kit (Cat# K4914)
- ANGPTL1 Antibody (NT) (Cat# 6761)
- Human CellExp™ FGL1, Fc Tag, Mouse Recombinant (Cat# P1415)
- Fibrinogen (plasminogen depleted), Human Plasma (Cat# 7692)

**FOR RESEARCH USE ONLY! Not to be used on humans.**