

Human CellExp™ Biotinylated PD-L1, Human Recombinant

CATALOG NO: P1422-10 10 µg
P1422-50 50 µg

ALTERNATE NAMES: Programmed Cell Death 1 Ligand 1, PDL1, PDCD1L1, CD274, B7 homolog 1, B7H1, B7-H1

MOL. WT. The protein is fused with 6xHis tag at the N-terminus, has a calculated MW of 26.4 kDa. The protein migrates as 35 -40 kDa in SDS-PAGE under reducing conditions due to glycosylation.

SOURCE: HEK293 cells

PURITY: ≥95% by SDS-PAGE

FORM: Liquid

FORMULATION: In PBS containing 20% glycerol

SPECIFIC ACTIVITY: BioVision's Biotinylated Human Recombinant PD-L1 has been tested for its biotin content (2-3 biotins per PD-L1 as determined by K811-100) and ability to bind Human PD-1 (Cat. No. 7498) in a functional ELISA with a linear range of 2-125 ng (0.02–1.25 µg/ml)

CONCENTRATION: 0.5 mg/ml

STORAGE CONDITIONS: Store at -20°C. For long term storage aliquot and store at -80°C. Avoid repeated freeze-thaw cycles. It may be further diluted to 0.1 mg/ml with PBS before use. -20°C

DESCRIPTION: Human Programmed Cell Death 1 Ligand-1 (PD-L1) is also known as CD274 and B7-H1) is a type I transmembrane protein which binds to its receptor, Programmed Cell Death protein 1 (PD-1). PD-L1 is widely distributed on leukocytes, nonhematopoietic cells, and in nonlymphoid tissues including islets. PD-L1 and PD-1 pathway serves as an "immune checkpoint" and its blockade is a highly promising therapy for a broad spectrum of cancers.

AMINO ACID SEQUENCE: Leu 25-Gln 167

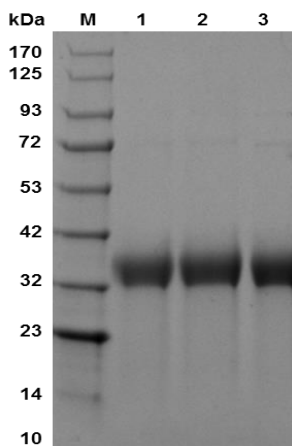


Fig A. SDS-PAGE (4-20%) of Biotinylated Human Recombinant PD-L1: Recombinant protein loaded under reducing conditions and stained with Coomassie Blue. Lane M: Protein Marker, Lane 1: Biotinylated Human PD-L1 (2.5 µg), Lane 2: Biotinylated Human PD-L1 (5 µg), Lane 3: Human PD-L1 (5 µg)

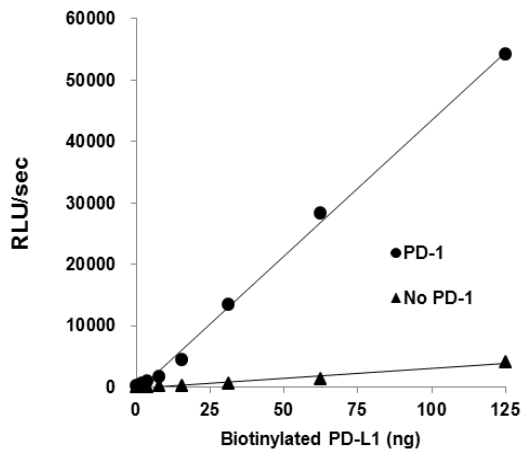


Fig B. Specific activity: Biotinylated Human Recombinant PD-L1 is able to bind Human PD-1 (Cat. No. 7498) immobilized at 2 µg/ml (100 µL/well) in a functional ELISA in a linear range of 2-125 ng. Luminescence was measured as RLU/sec using SuperBrite™ ELISA HRP Chemiluminescence Substrate Kit (Cat. No. K4005).

RELATED PRODUCTS:

- Human CellExp™ PD-1 /PDCD1, C-Fc Tag, human recombinant (Cat. No. 7500)
- PD-1/PD-L1 Inhibitor 2 (Cat. No. B1050)
- Biotin Quantitation Kit (Colorimetric) (Cat. No. K811)
- Biotinylated PD-1/PDCD1, Human Recombinant (Cat. No. P1038)
- SuperBrite™ ELISA HRP Chemiluminescence Substrate Kit (Cat. No. K4005)
- Human CellExp™ PD-1 /PDCD1, human recombinant (Cat. No. 7498)
- PD-1 (human) ELISA Kit (Cat. No. K4153)
- PD-1/PDCD1, Human Recombinant (Cat. No. P1024)
- Human CellExp™ PD-L1 /CD274/B7-H1, human recombinant (Cat. No. 7429)
- Human CellExp™ Biotinylated PD-1 /PDCD1, His Tag & Fc Tag, human recombinant (Cat. No. 7877)
- PD-L1 /CD274, Human Recombinant (Cat. No. P1023)

FOR RESEARCH USE ONLY! Not to be used on humans.