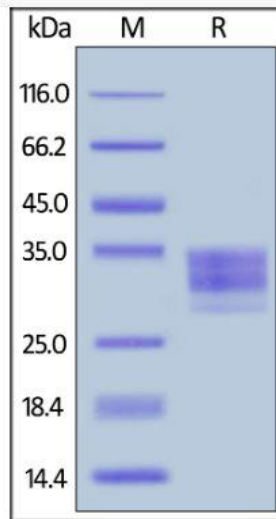
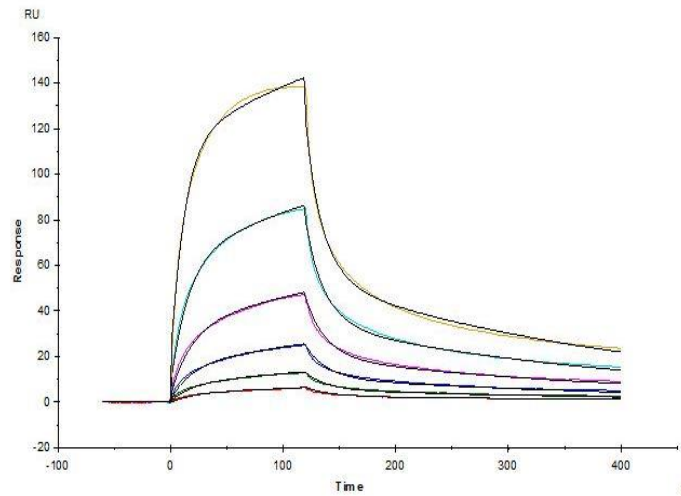


# Human CellExp™ Fc gamma RIV / CD16-2, Mouse recombinant

<b>CATALOG NO:</b>	P1426-10    10 µg P1426-50    50 µg
<b>ALTERNATE NAMES:</b>	Fc gamma RIV, CD16-2, Fcgr4
<b>MOL. WT.</b>	This protein carries a polyhistidine tag at the C-terminus. The protein has a calculated MW of 22.8 kDa. The protein migrates as 28-35 kDa under reducing (R) condition (SDS-PAGE) due to glycosylation.
<b>SOURCE:</b>	HEK 293 Cells
<b>PURITY:</b>	>90% SDS-PAGE
<b>ENDOTOXIN:</b>	Less than 1.0 EU per µg by the LAL method.
<b>FORM:</b>	Lyophilized powder
<b>FORMULATION:</b>	Lyophilized from 0.22 µm filtered solution in PBS, pH7.4. Normally trehalose is added as protectant before lyophilization.
<b>RECONSTITUTION:</b>	Reconstitute in sterile deionized water to the desired protein concentration.
<b>STORAGE CONDITIONS:</b>	Store at -20°C. After reconstitution, aliquot and store at -70°C and use within 3 months. Avoid repeated freezing and thawing cycles. -20°C
<b>DESCRIPTION:</b>	FcγR4 (Low affinity immunoglobulin gamma Fc region receptor IV) is also known as CD16-2, FcγRIV, receptor for the Fc region of immunoglobulin gamma. Also acts as a receptor for the Fc region of immunoglobulin epsilon. Binds with intermediate affinity to both IgG2a and IgG2b. Does not display binding to IgG1 or IgG3. Plays a role in promoting bone resorption by enhancing osteoclast differentiation following binding to IgG2a. Binds with low affinity to both the a and b allotypes of IgE. Has also been shown to bind to IgE allotype a only but not to allotype b. Binding to IgE promotes macrophage-mediated phagocytosis, antigen presentation to T cells, production of proinflammatory cytokines and the late phase of cutaneous allergic reactions.
<b>AMINO ACID SEQUENCE:</b>	AA Gly 21 - Gln 203



Mouse CD16-2, His Tag on SDS-PAGE under reducing (R) condition.



Captured Mouse CD16-2, His Tag on NTA-Series S sensor chip can bind OKT3 with an affinity constant of 154 nM as determined in a SPR assay.

#### RELATED PRODUCTS:

- Human CellExp™ CD19, Fc Tag, Rhesus macaque recombinant (Cat# P1329)
- Human CellExp™ CD19, Fc Tag, Human recombinant (Cat# P1328)
- Human CellExp™ FCGR3A/CD16a, human recombinant (Cat# 7431)
- Human CellExp™ Fc gamma RIIB /CD32b, human recombinant (Cat# 7388)
- Human CellExp™ Fc gamma RIIIB /CD16b, human recombinant (Cat# 7446)
- Human CellExp™ CD23, human recombinant (Cat# 7435)
- QuickDetect™ IgG (Human) ELISA Kit (Cat# E4475)

**FOR RESEARCH USE ONLY! Not to be used on humans.**