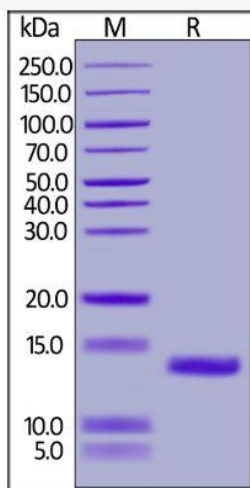
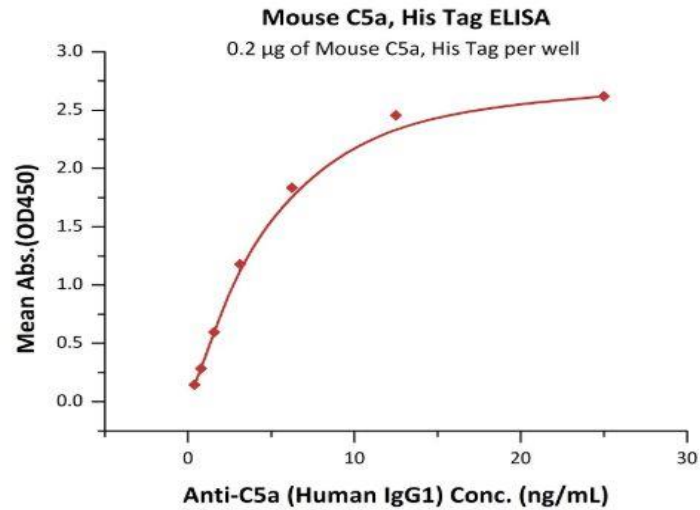


# Human CellExp™ Complement C5a , Mouse recombinant

<b>CATALOG NO:</b>	P1427-10    10 µg P1427-50    50 µg
<b>ALTERNATE NAMES:</b>	C5a, Complement Component 5a, Hemolytic complement
<b>MOL. WT.</b>	This protein carries a polyhistidine tag at the N-terminus. The protein has a calculated MW of 10.9 kDa. The protein migrates as 14 kDa under reducing (R) condition (SDS-PAGE) due to glycosylation.
<b>SOURCE:</b>	E.coli
<b>PURITY:</b>	>95% SDS-PAGE
<b>ENDOTOXIN:</b>	Less than 1.0 EU per µg by the LAL method.
<b>FORM:</b>	Lyophilized powder
<b>FORMULATION:</b>	Lyophilized from 0.22 µm filtered solution in PBS, pH7.4. Normally trehalose is added as protectant before lyophilization.
<b>RECONSTITUTION:</b>	Reconstitute in sterile deionized water to the desired protein concentration.
<b>SPECIFIC ACTIVITY:</b>	Immobilized Mouse C5a, His Tag at 2 µg/ml (100 µl/well) can bind Anti-C5a (Human IgG1) with a linear range of 0.4-6 ng/ml.
<b>STORAGE CONDITIONS:</b>	Store at -20°C. After reconstitution, aliquot and store at -70°C and use within 3 months. Avoid repeated freezing and thawing cycles. -20°C
<b>DESCRIPTION:</b>	Complement Component C5a (C5a) is also known as C5, and is a protein fragment released from complement component C5, is a potent chemotactic factor for human peripheral blood neutrophils and monocytes, and is believed to play an important role in a number of inflammatory conditions. There are several functions in the below: C5a is an anaphylatoxin, causing the release of histamine from mast cells; C5a is effective leukocyte chemoattractant, causing the accumulation of white blood cells, especially neutrophil granulocytes, at sites of complement activation; C5a activates white blood cells by increasing avidity for white blood cell integrin's and upregulating the Lipoxygenase pathway for arachidonic acid metabolism; C5a is a powerful inflammatory mediator, and seems to be a key factor in the development of pathology of many inflammatory diseases involving the complement system; C5a modulates balance between activating versus inhibitory IgG Fc receptors on leukocytes, thereby enhancing autoimmune response.
<b>AMINO ACID SEQUENCE:</b>	AA Asn 679 - Arg 755



Mouse C5a, His Tag on SDS-PAGE under reducing (R) condition.



Immobilized Mouse C5a, His Tag at 2 µg/ml (100 µl/well) can bind Anti-C5a (Human IgG1) with a linear range of 0.4-6 ng/ml.

#### RELATED PRODUCTS:

- Complement C5, Human Plasma (Cat# P1273)
- C5a (His-Tag), murine recombinant (Cat# 4895A)
- C5a (His-Tag), human recombinant (Cat# 4995A)
- C5a, human recombinant (Cat# 4995B)
- C5a Antibody (Cat# 5895)
- Human CellExp™ Complement C5, Cynomolgus Recombinant (Cat# P1414)
- Complement C4c, Human Plasma (Cat# P1272)
- Complement C5, Human Plasma (Cat# P1273)

**FOR RESEARCH USE ONLY! Not to be used on humans.**