

HBsAg (Subtype Ad), Human Plasma

06/19

| | | |
|----------------------------|---|--------|
| CATALOG NO: | P1439-100 | 100 µg |
| | P1439-500 | 500 µg |
| ALTERNATE NAMES: | Hepatitis B Surface Ag Subtype ad protein, Hepatitis B surface Ag protein | |
| SOURCE: | Human plasma | |
| PURITY: | >99% SDS-PAGE. | |
| FORM: | Liquid | |
| FORMULATION: | In 50 mM Phosphate, 150 mM NaCl (pH 7.2 – 7.6) 0.09% Sodium Azide. Heat Inactivated at 60°C for 15 hours | |
| STORAGE CONDITIONS: | Store at 4°C in working aliquots. | |
| DESCRIPTION: | Hepatitis B virus is a member of the Hepadnavirus family. Virion diameter of this virus is 22 nm. Lipid and protein form part of the surface of the virion, which is known as the surface antigen HBsAg. HBsAg is one of the first serum markers to appear during the course of HBV infection. HBsAg is a glycosylated lipoprotein, which is shed in large quantities in the serum of infected individuals. In addition to hepatitis, infection with HBV can also lead to cirrhosis and hepatocellular carcinoma. HBsAg-Ad is a surface antigen for Hepatitis B virus of subtype Ad (HbsAg-Ad). | |

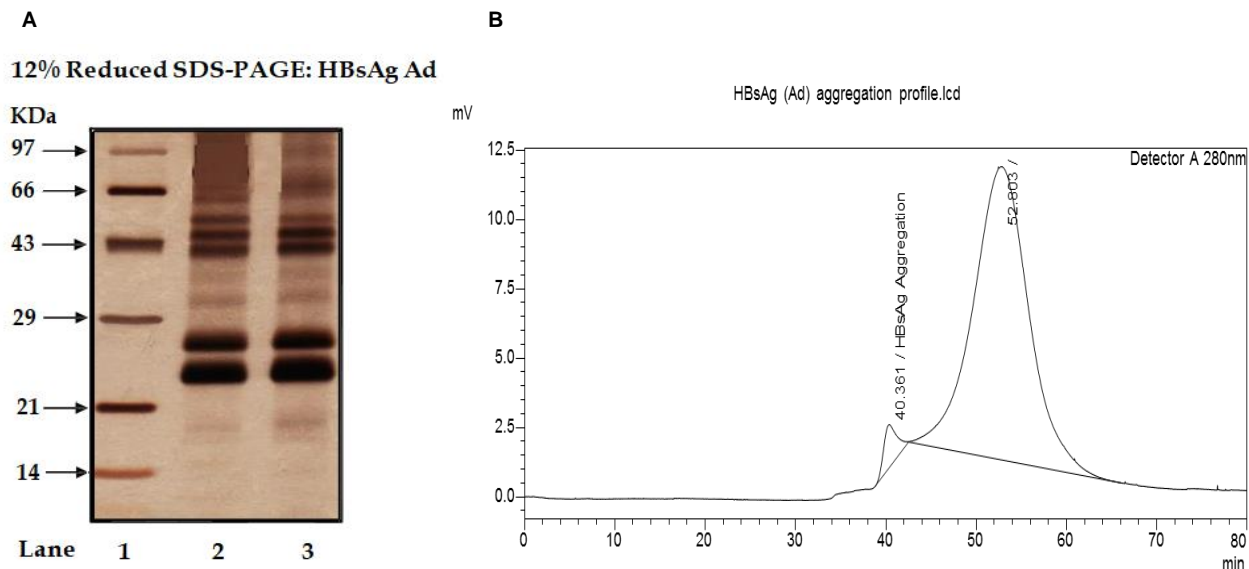


Fig. A: SDS-PAGE (12%) of HBsAg (Subtype Ad)

Fig. B: HBsAg (Subtype Ad) aggregation profile by HPLC

RELATED PRODUCTS:

Human CellExp™ Zika virus NS1 Protein (P1062)
 Human CellExp™ Influenza A virus / Neuraminidase (NA) (7508)
 HBsAg (Subtype Ay), Human Plasma (P1440)
 Recombinant Chikungunya Virus E1 (P1113)

FOR RESEARCH USE ONLY! Not to be used on humans.