

# C-Reactive Protein, Human fluids

06/19

**CATALOG NO:** P1441-1 1 mg  
P1441-5 5 mg

**ALTERNATE NAMES:** CRP

**MOL. WT.** ~25 kDa

**SOURCE:** Human pleural and ascites fluid

**PURITY:** >99% SDS-PAGE.

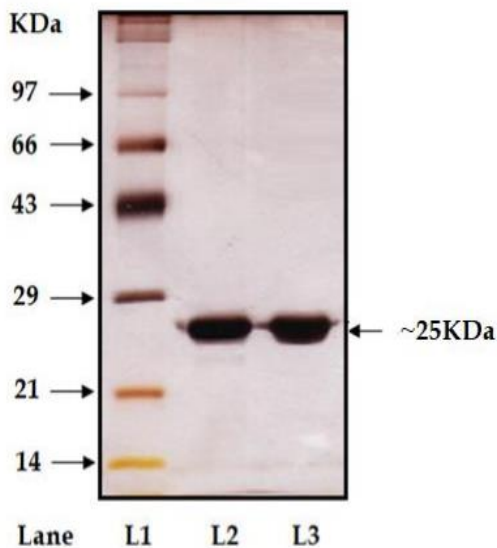
**FORM:** Liquid

**FORMULATION:** In 20 mM Tris & 280 mM NaCl, 5 mM CaCl<sub>2</sub> (pH 7.9 – 8.1) containing 0.09% Sodium Azide

**STORAGE CONDITIONS:** Store at 4°C in working aliquots. 4.0 °C

**DESCRIPTION:** C-reactive protein (CRP) is a biomarker for inflammation in the human body. The elevation of CRP has also been linked to pathophysiology of atherosclerosis and risk to heart disease. In more than 30 epidemiological studies, CRP has been linked with cardiovascular risk. CRP is believed to be a positive acute phase protein and biomarker of systemic inflammation. It increases in response to various types of injury. In comparison to other acute phase markers, its levels are quite stable, with no significant daily variation, and can thus be precisely measured.

## 12% Reduced SDS-PAGE: CRP



## RELATED PRODUCTS:

C-Reactive Protein (CRP) (Human) ELISA Kit (E4289)  
 CRP, human recombinant (4864)  
 CRP, human recombinant (4863)  
 Human CellExp™ C-reactive/CRP, human recombinant (7242)

**FOR RESEARCH USE ONLY! Not to be used on humans.**