

Human CellExp™ IL-12 R beta 1 / CD212, Fc Tag, Human Recombinant

CATALOG NO: P1458 10 µg
P1458 50 µg

ALTERNATE NAMES: IL-12 R beta 1, IL12RB1, CD212, IL12R, IL12RB, IL-12RB1

MOL. WT. This protein carries a human IgG1 Fc tag at the C-terminus. The protein has a calculated MW of 83.5 kDa. The protein migrates as 90 kDa under reducing (R) condition (SDS-PAGE) due to glycosylation.

SOURCE: HEK 293 cells

PURITY: >95% SDS-PAGE

ENDOTOXIN: Less than 1.0 EU per µg by the LAL method.

FORM: Lyophilized

FORMULATION: Lyophilized from 0.22 µm filtered solution in Tris with Glycine, Arginine and NaCl, pH7.5. Normally trehalose is added as protectant before lyophilization.

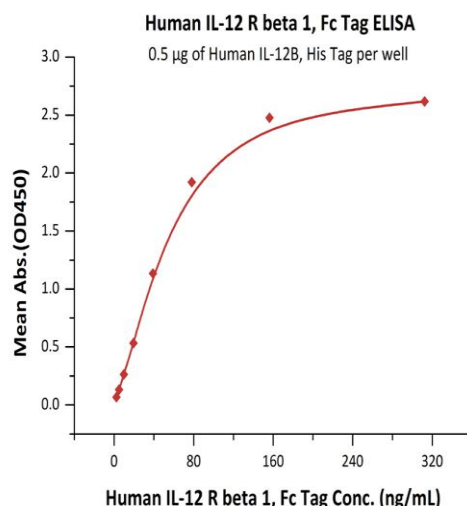
RECONSTITUTION: Reconstitute in sterile deionized water to the desired protein concentration.

SPECIFIC ACTIVITY: Immobilized Human IL-12B, His Tag at 5 µg/mL (100 µL/well) can bind Human IL-12 R beta 1, Fc Tag with a linear range of 5-78 ng/mL

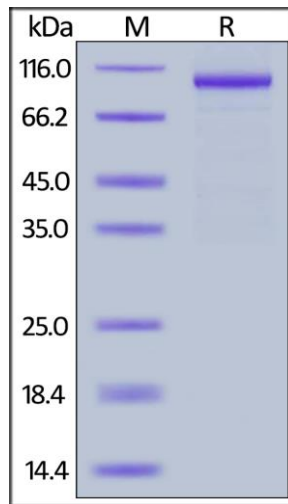
STORAGE CONDITIONS: Store at -20°C. After reconstitution, aliquot and store at -80°C and use within 3 months. Avoid repeated freezing and thawing cycles. -20°C

DESCRIPTION: The human IL-12 R subunit is a member of the cytokine receptor superfamily and the functional high-affinity IL-12R is composed of at least two beta-type cytokine receptor subunits, each independently exhibiting a low affinity for IL-12. IL-12 R beta 1 (Interleukin-12 receptor subunit beta-1) is also known as IL-12RB1, CD212. Functions as an interleukin receptor which binds interleukin-12 with low affinity and is involved in IL12 transduction. Associated with IL12RB2 it forms a functional, high affinity receptor for IL12. Associates also with IL23R to form the interleukin-23 receptor which functions in IL23 signal transduction probably through activation of the Jak-Stat signaling cascade.

AMINO ACID SEQUENCE: Cys 24 - Glu 540



Immobilized Human IL-12B, His Tag at 5 µg/mL (100 µL/well) can bind Human IL-12 R beta 1, Fc Tag with a linear range of 5-78 ng/mL



Human IL-12 R beta 1, Fc Tag on SDS-PAGE under reducing (R) condition. The gel was stained overnight with Coomassie Blue. The purity of the protein is greater than 95%.

RELATED PRODUCTS:

IL-12, human recombinant (4161)
Human CellExp™ IL-12B & IL-12A Heterodimer, Human Recombinant (P1178)
Human CellExp™ IL-12, Human Recombinant (6467)
IL-12 (Human) ELISA Kit (K4226)
Human CellExp™ IL-12, Mouse Recombinant (4719)

FOR RESEARCH USE ONLY! Not to be used on humans.