

# Human CellExp™ DLL3, Human Recombinant

**CATALOG NO:** P1463-10 10 µg  
P1463-50 50 µg

**ALTERNATE NAMES:** Delta3, delta-like 3 (Drosophila), delta-like protein 3, DLL3, Pudgy, SCDO1, SCDO1delta3

**MOL. WT.** This protein carries a polyhistidine tag at the C-terminus. The protein has a calculated MW of 50.4 kDa. The protein migrates as 50-66 kDa under reducing (R) condition (SDS-PAGE) due to glycosylation.

**SOURCE:** HEK 293 cells

**PURITY:** >90% SDS-PAGE

**ENDOTOXIN:** Less than 1.0 EU per µg by the LAL method.

**FORM:** Lyophilized

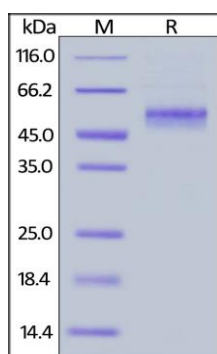
**FORMULATION:** Lyophilized from 0.22 µm filtered solution in PBS with Arginine, pH7.4. Normally trehalose is added as protectant before lyophilization.

**RECONSTITUTION:** Reconstitute in sterile deionized water to the desired protein concentration.

**STORAGE CONDITIONS:** Store at -20°C. After reconstitution, aliquot and store at -80°C and use within 3 months. Avoid repeated freezing and thawing cycles. -20°C

**DESCRIPTION:** Delta-like protein 3 (DLL3) is a transmembrane protein that belongs to the Delta/Serrate/Lag-2 (DSL) family of Notch ligands. May be required to divert neurons along a specific differentiation pathway. Plays a role in the formation of somite boundaries during segmentation of the paraxial mesoderm. DLL3 protein is expressed on the surface of tumor cells but not in normal adult tissues.

**AMINO ACID SEQUENCE:** Ala 27 - Leu 492



Human DLL3, His Tag on SDS-PAGE under reducing (R) condition. The gel was stained overnight with Coomassie Blue. The purity of the protein is greater than 90%.

## RELATED PRODUCTS:

- Human CellExp™ DLL1, Mouse Recombinant (P1162)
- Human CellExp™ sDLL-1, Human Recombinant (7133)
- Human CellExp™ sDLL-4, Human Recombinant (7134)
- Human CellExp™ DLL3, Human Recombinant (P1165)
- Human CellExp™ DLL4, Mouse Recombinant (P1163)

**FOR RESEARCH USE ONLY! Not to be used on humans.**